

CERTOCLAV



**Made for
a lifetime**

COMPACT LABORATORY AUTOCLAVES

valid from 1/1/2022



Manuals, technical information and training videos:
www.certoclav.com

Contents

General

| | |
|----------------------------|---|
| Foreword _____ | 4 |
| Highlights _____ | 5 |
| Application overview _____ | 6 |

Vertical laboratory autoclaves made of aluminum

| | |
|------------------------------|---|
| CertoClav EL _____ | 8 |
| CertoClav MultiControl _____ | 9 |

Vertical laboratory autoclaves made of stainless steel

| | |
|--------------------------------|----|
| CertoClav Classic _____ | 11 |
| CertoClav MultiControl 2 _____ | 12 |
| CertoClav Connect _____ | 13 |

Horizontal laboratory autoclaves

| | |
|--|----|
| CertoClav Vacuum Pro 12 & 22 _____ | 15 |
| icanCLAVE STE-45-T and CertoAssist - SET _____ | 16 |

Services, support & accessories

| | |
|--------------------------|----|
| Services & support _____ | 17 |
| Accessories _____ | 18 |
| Wear parts _____ | 22 |

CertoClav: Quality since 1957

CertoClav has been developing and producing innovative and intelligent steam sterilizers for over 60 years. Because of their compact size, our autoclaves are especially interesting for small labs or as an optimal addition to a large autoclave. CertoClav autoclaves have clear benefits for everyday laboratory practice. Their excellent performance stems not only from pioneering technology, but also from our reliable services.

Thanks to our sophisticated technology and the tried and tested, high quality components our autoclaves are low-maintenance and often in use for over 20 years. We offer a quick and inexpensive repair and maintenance service as a matter of course. Replacement devices are available anytime if needed. Here at CertoClav, our customers are our first priority. We want to offer you the best possible service and make sure you are 100% satisfied with your order and our products.

All our products are CE certified and follow the subsequent directives and standards:

- 2014/35/EU Low Voltage Directive
- 2014/30/EU EMV Directive
- 2011/65/EU Directive on the restriction of the use of certain hazardous substances in electrical and electronic equipment

You can find all CertoClav laboratory autoclaves and accessories in our new product catalogue 2022, compact at a glance. This catalogue reflects the know-how and wealth of experience, we gathered in collaboration with you in all sectors, all around the world. We, at CertoClav, are proud to be able to offer you cost-efficient end-to-end solutions among autoclaves, which let you quickly, safely and conveniently perform dependable sterilizations of liquids and solids of all kinds. If you want to learn more about CertoClav, our products, latest innovations and our retailers visit our website: www.certoclav.com

If you need further assistance please let us know and directly contact us via e-mail at support@certoclav.com or via phone at +43 732 674 278.



CertoClav laboratory autoclaves

CertoClav autoclaves are efficient and economical to operate. Even small quantities can be autoclaved. Their simple operation allows effortless work in just a few easy steps. They are reliable, durable, nearly maintenance-free and transportable.

In addition to their robust construction, CertoClav autoclaves are distinguished by their functional and straightforward design. Many of our models can be programmed according to user requirements and are therefore extremely versatile. This makes CertoClav autoclaves suitable for a wide range of applications in everyday laboratory work, as well as in research and education. In addition to our devices we also offer a range of documentation and process management solutions.

With CertoTrace we offer a secure, simple and professional way to document the entire sterilization process. The software records which products have been sterilized by whom and when. Therefore, the traceability of sterilized products and the management of expiration dates are already integrated in the work process.

Our CertoCloud is a management software for PCs, smartphones and tablets. With it, you are able to control and manage your autoclave from anywhere you are. CertoCloud is also available as a lab-internal private cloud, which does not require an internet connection.



Autoclaves

Vertical laboratory autoclaves made of aluminum

- CertoClav EL
- CertoClav MultiControl

Vertical laboratory autoclaves made of stainless steel

- CertoClav Classic
- CertoClav MultiControl 2
- CertoClav Connect

Horizontal laboratory autoclaves

- CertoClav VacPro 12
- CertoClav VacPro 22
- icanCLAVE STE-45-T & CertoAssist - SET

Highlights*

- 12-45-liter chamber volume
- robust construction
- cost-effective, space-saving solution
- fast heat-up time due to high performance
- for exacting sterilization
- autoclaves with vacuum
- sterilization of liquids, solids, waste, etc.
- customizable programming
- media sensor for liquids
- integrated documentation solution
- GMP/GLP, IQ/OQ/IPQ

* Not every highlight is included in every model

12-45 liter
chamber volume

Function and application overview

| CertoClav Autoklav | EL | MultiControl | Classic | MultiControl 2 | Connect | VacPro 12 + 22 | icanCLAVE STE-45-T |
|--|----|--------------|---------|----------------|---------|-------------------|-----------------------|
| Feature | | | | | | | |
| documentation | | + | | + | + | + | + |
| programmability | | + | | + | + | + | |
| touchscreen | | | | | + | + | + |
| CertoCloud | | | | | + | + | + |
| Sterilization of | | | | | | | |
| unpackaged solids without hollow bodies | + | + | + | + | + | + | + |
| liquids | + | + | + | + | + | + | + |
| bottles | + | + | + | + | + | + | + |
| instruments | + | + | + | + | + | + | + |
| synthetic materials | + | + | + | + | + | + | + |
| rubber (105 °C) | | + | | + | + | + | |
| textiles | | | | | | + | |
| packaged instruments | | | | | | + | + |
| porous materials | | | | | | + | |
| hollow bodies type A and type B (pipettes, empty glassware, vials and tubes) according to EN 13060 | | | | | | + | |
| Processing / preparation of | | | | | | | |
| culture media / agar agar | + | + | + | + | + | + | + |
| Waste treatment | | | | | | | |
| sterilization of waste | + | + | + | + | + | + | + |
| sterilization of waste in disposal bags | | | | | | + | + |
| sterilization of biological hazardous substances (S2) | | + | | + | | | |
| Material tests | | + | | + | + | + | + |
| Long-term cycles | | + | | + | + | | |
| automated cycle repetition | | | | | | + | |
| Class B program cycles | | | | | | + | + |

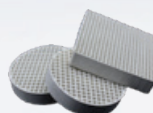
Sterilizable goods



Instruments

Unpackaged instruments
single & double
packaged instrumentsLiquids
in open bottlesLiquids with
Media sensorFood
in open jarsSynthetics &
rubber

Textiles

Porous materials
& sandInstruments
with cavities

Filters & waste

Vertical laboratory autoclaves made of aluminum

Benefits at a glance



The classics among our laboratory autoclaves have been on the market for over 60 years and impress with their robust construction. Furthermore, our autoclaves are extremely low maintenance. They are vented by flow procedures or fractional venting.



The sterilization chamber is made of high-quality 3103 aluminum. A heater is pressed into the bottom of the chamber, but the heating elements do not get into contact with the water directly and therefore cannot calcify. This extends the service life of the autoclaves.



Our laboratory autoclaves are ready for operation in just a few simple steps. The sterilization chamber can be opened and closed safely and easily with one simple step, simply turn the lid and remove it. They are both easy to transport and location independent. All you need is a power supply. The water used is a mixture of tap water and demineralized water.



Our autoclaves are safeguarded by a multi-level safety system. It consists of an overpressure valve, a pressure valve, a safety lock inside the lid to prevent opening under pressure and the overpressure safety cavity.

CertoClav EL

The economical end-to-end solution

For more than 60 years, the CertoClav EL has been our tried and tested economic autoclave end-to-end solution with valve control. A precision thermometer, a control valve, and a precision manometer with drag indicator provide precise processes and accurate results for all applications.

This model is available in two versions, each with two temperature levels. You can choose between 125/140 °C and 115/121 °C. These temperature settings are controlled via the control valve on the lid. These valves are not interchangeable, because the thermostat of the device is harmonized with and calibrated to the respective valve!

Ideal for the sterilization of unpackaged solids without hollow bodies, liquids, bottles, instruments, synthetic materials, food preservation, culture media preparation, and waste.

Key features

- robust construction
- 2 temperature levels (125/140 °C & 115/121 °C)
- thermostat controlled
- simple operation
- high heating capacity
- heating plate integrated into base
- venting by flow procedure
- precision thermometer
- precision manometer with drag pointer

Scope of delivery:

CertoClav EL including instrument tray and power cable

Also available as a SET with a wire basket, made of stainless steel, for convenient handling of autoclaving goods.



control valve

Specifications

| | CertoClav EL 125/140 °C | | CertoClav EL 115/121 °C | |
|--------------------------------|-------------------------|-------------------|-------------------------|-------------------|
| Article number | 8501312 | 8501318 | 8501312A | 8501318A |
| Chamber volume | 12 liters | 18 liters | 12 liters | 18 liters |
| Chamber diameter | 24 cm | 24 cm | 24 cm | 24 cm |
| Chamber depth | 26 cm | 39 cm | 26 cm | 39 cm |
| Chamber material | 3103-aluminum | 3103-aluminum | 3103-aluminum | 3103-aluminum |
| Max. operating pressure | 2.7 bar | 2.7 bar | 2.7 bar | 2.7 bar |
| Mains connection | 230 V, 50/60 Hz | 230 V, 50/60 Hz | 230 V, 50/60 Hz | 230 V, 50/60 Hz |
| Heating capacity | 1900 W | 1900 W | 1900 W | 1900 W |
| Max. sterilization temperature | 125 °C or 140 °C | 125 °C or 140 °C | 115 °C or 121 °C | 115 °C or 121 °C |
| Net weight | 6.2 kg | 7.6 kg | 6.2 kg | 7.6 kg |
| Product dimensions (W*D*H) | 39.5*27.5*50.5 cm | 39.5*27.5*66.5 cm | 39.5*27.5*50.5 cm | 39.5*27.5*66.5 cm |

Accessories

| Article | Article number |
|-------------------------|----------------|
| Wire basket with handle | 8583010 |
| Service Set 1 | 1250499 |
| Condensation vessel | 8582020 |
| Exhaust hose | 8582016 |
| Water distiller | 8500482 |

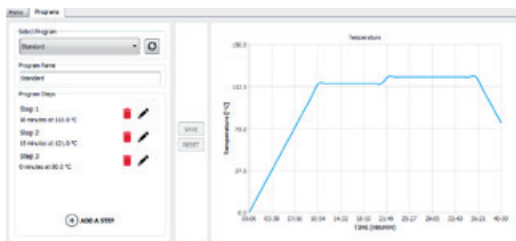
CertoClav MultiControl

The programmable all-rounder

The CertoClav MultiControl is a PT100 sensor-controlled laboratory autoclave. It is operated via a control unit. With this control unit you can customize the programs of the autoclave to your requirements. The possible settings range from 1 minute to 30 days and from room temperature to 140 °C. This simplifies and accelerates the work process in the laboratory and, at the same time, offers a versatile range of applications. The control unit is equipped with a USB and a printer port (RS232) for the transfer or printout of sterilization protocols. The automated process control saves valuable employee time and the automated error detection validates the sterilization result.

A software, recording the process data via USB, is included as a basic version. Without connecting a PC, the control unit can only be used to set programs that include just one time and one temperature step. For programs that include several time and temperature steps, the PC software professional version is required.

Ideal for extended / long-term cycles and material tests like GSB AL 631, HAST Test, Pressure Cooker Test und IPC-TM 650, as well as culture media preparation, sterilization of waste, sterilization of biological hazardous substances (S2), unpackaged solids without hollow bodies, liquids, bottles, instruments, synthetic materials, and rubber.



PC software professional version



Key features

- microprocessor-controlled
- automatic venting
- electronic process control
- PT100 temperature sensor
- time and temperature individually editable
- control unit with LCD display
- venting by fractional flow procedure
- RS232 & USB port
- heating integrated in the base

Scope of delivery:

Product set of CertoClav MultiControl and MC2 control unit, including instrument tray, power cable, PC software basic version available as free download

Also available as a SET with a wire basket, made of stainless steel, for convenient handling of autoclaving goods.

Specifications

| | CertoClav MultiControl |
|--------------------------------|-----------------------------|
| Article number | 8502312A |
| Chamber volume | 12 liters |
| Chamber diameter | 24 cm |
| Chamber depth | 26 cm |
| Chamber material | 3103-aluminum |
| Max. operating pressure | 2.7 bar |
| Mains connection | 230 V, 50/60 Hz |
| Heating capacity | 1900 W |
| Max. sterilization temperature | 20 °C to 140 °C, adjustable |
| Net weight | 6.6 kg |
| Product dimensions (W*D*H) | 39.5*27.5*48 cm |

Accessories

| Article | Article number |
|---|----------------|
| Wire basket with handle | 8583010 |
| Service Set 1 | 1250499 |
| Condensation vessel incl. filter & hose | 8582010 |
| Filter cartridge | 8582011 |
| Condensation vessel incl. hose | 8582020 |
| Exhaust hose | 8582016 |
| PC software professional version | 8500210 |
| Log printer | 1300187 |
| Water distiller | 8500482 |

factory calibration possible.

Vertical laboratory autoclaves made of stainless steel

Benefits at a glance



The new, improved generation of our laboratory autoclaves comes in a new design, with more functions and a completely new touchscreen control. The steam sterilizers impress with their solid construction and they are extremely low maintenance. They are vented by flow procedures or fractional venting.



The sterilization chamber is made of corrosion-resistant, electropolished stainless steel (316L), which makes it extremely robust. A heater is bolted to the bottom of the chamber, but the heating elements do not get into contact with the water directly and therefore cannot calcify. This extends the service life of the autoclaves.



Our laboratory autoclaves are ready for operation in just a few simple steps. The sterilization chamber can be opened and closed safely and easily with one simple step, simply turn the lid and remove it. They are both easy to transport and location independent. All you need is a power supply. The water used is a mixture of tap water and demineralized water.



Our autoclaves are safeguarded by a multi-level safety system. It consists of an overpressure valve, a pressure valve, a safety lock inside the lid to prevent opening under pressure and a bimetal safeguard to prevent overheating of the device.

CertoClav Classic

The indestructible with timer

The robust CertoClav Classic, the result of the further development of the CertoClav EL, is made of stainless steel and extremely low maintenance. A precision thermometer, a control valve, and a precision manometer with drag indicator provide precise processes and accurate results for all applications.

This model is available in two versions, each with two temperature levels. You can choose between 125/140 °C and 115/121 °C. These temperature settings are controlled via the control valve on the lid. These valves are not interchangeable, because the thermostat of the device is harmonized with and calibrated to the respective valve!

A timer is integrated to regulate the duration of the sterilization process. If the timer is activated, the device switches off automatically after the predefined sterilization time has passed. If the timer has not been activated, the autoclave must be switched off manually.



control valve

Key features

- robust construction
- 2 temperature levels (125/140 °C & 115/121 °C)
- thermostat controlled
- simple operation
- integrated timer function
- venting by flow procedure
- precision thermometer
- precision manometer with drag pointer
- heating plate integrated into base

Scope of delivery:

CertoClav Classic including instrument tray and power cable

Ideal for the sterilization of unpackaged solids without hollow bodies, liquids, bottles, instruments, synthetic materials, culture media preparation, and waste.

Specifications

| | CertoClav Classic 125/140 °C | CertoClav Classic 115/121 °C |
|--------------------------------|------------------------------|------------------------------|
| Article number | 8510174 | 8510184 |
| Chamber volume | 18 liters | 18 liters |
| Chamber diameter | 26 cm | 26 cm |
| Chamber depth | 35 cm | 35 cm |
| Chamber material | stainless steel 316L | stainless steel 316L |
| Max. operating pressure | 2.7 bar | 2.7 bar |
| Mains connection | 230 V, 50/60 Hz | 230 V, 50/60 Hz |
| Heating capacity | 1300 W | 1300 W |
| Max. sterilization temperature | 125 °C or 140 °C | 115 °C or 121 °C |
| Net weight | 8.8 kg | 8.8 kg |
| Product dimensions (W*D*H) | 44.5*30*60.5 cm | 44.5*30*60.5 cm |

Accessories

| Article | Article number |
|-------------------------|----------------|
| Wire basket with handle | 1300149 |
| Service Set 2 | 1310186 |
| Condensation vessel | 8582020 |
| Exhaust hose | 8582016 |
| Water distiller | 8500482 |

CertoClav MultiControl 2

The programmable all-rounder

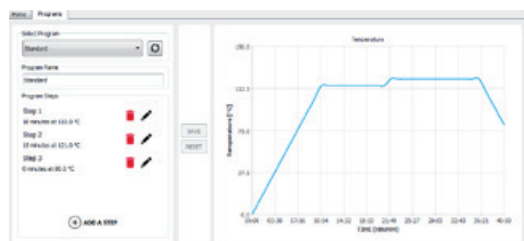
The CertoClav MultiControl 2 is a PT100 sensor-controlled laboratory autoclave. It is operated via a control unit. With this control unit you can customize the programs of the autoclave to your requirements. The possible settings range from 1 minute to 30 days and from room temperature to 140 °C. This simplifies and accelerates the work process in the laboratory and at the same time, offers a versatile range of applications. The control unit is equipped with a USB and a printer port (RS232) for the transfer or printout of sterilization protocols. The automated process control saves valuable employee time and the automated error detection validates the sterilization result.

Key features

- microprocessor-controlled
- electronic process control
- PT100 temperature sensor
- time and temperature individually editable
- control unit with LCD display
- automatic venting
- venting by fractional flow procedure
- RS232 & USB port
- heating integrated in the base

Scope of delivery:

Product set of CertoClav MultiControl 2 and MC2 control unit, including instrument tray, power cable, PC software basic version available as free download



PC software professional version

Specifications

| | CertoClav MultiControl 2 |
|--------------------------------|-----------------------------|
| Article number | 8510175 |
| Chamber volume | 18 liters |
| Chamber diameter | 26 cm |
| Chamber depth | 35 cm |
| Chamber material | stainless steel 316L |
| Max. operating pressure | 2.7 bar |
| Mains connection | 230 V, 50/60 Hz |
| Heating capacity | 1300 W |
| Max. sterilization temperature | 20 °C to 140 °C, adjustable |
| Net weight | 9.5 kg |
| Product dimensions (W*D*H) | 44.5*30*53.5 cm |

A software, recording the process data via USB, is included as a basic version. With the control unit only programs that include just one time and one temperature step can be set. For programs that include several time and temperature steps, the PC software professional version is required.

Ideal for extended/ long- term cycles and material tests like GSB AL 631, HAST Test, Pressure Cooker Test und IPC-TM 650, as well as for culture media preparation, sterilization of waste, sterilization of biological hazardous substances (S2), unpackaged solids without hollow bodies, liquids, bottles, instruments, synthetic materials, and rubber.



Accessories

| Article | Article number |
|---|----------------|
| Wire basket with handle | 1300149 |
| Service Set 2 | 1310186 |
| Condensation vessel incl. filter & hose | 8582010 |
| Filter cartridge | 8582011 |
| Condensation vessel incl. hose | 8582020 |
| Exhaust hose | 8582016 |
| PC software professional version | 8500210 |
| Log printer | 1300187 |
| Water distiller | 8500482 |

factory calibration possible.

CertoClav Connect



The fully automatic with cloud documentation

CertoClav Connect is a fully automated laboratory autoclave that requires no prior training. It is operated with a 7-inch, robust, high resolution touch screen, the CertoTouch. All operating steps are explained with training videos directly on the CertoTouch. Individual sterilization programs, which include several time and temperature steps can also be created directly on the CertoTouch. Once the autoclave is connected to the Internet via WLAN, it can be connected to the CertoCloud, an automatic process documentation.

With this automatic documentation the autoclave meets all GLP requirements. The basic license of CertoCloud is already included.

Ideal for extended/ long- term cycles and material tests like GSB AL 631, HAST Test, Pressure Cooker Test und IPC-TM 650, as well as for culture media preparation, sterilization of waste, unpackaged solids without hollow bodies, liquids, bottles, instruments, synthetic materials, and rubber.

Key features

- fully automated
- automatic venting
- electric exhaust valve
- flexible media sensor
- time and temperature individually editable
- control unit with LCD display
- venting by fractional flow procedure
- Ethernet, LAN, Wi-Fi
- 7" touch screen with video assistant
- cloud connection
- heating integrated in the base
- electronic safety interlock



PT100 temperature sensor –
For autoclaving liquids

Scope of delivery:

Product set of CertoClav Connect & CertoTouch screen, including instrument tray, flexible media sensor, power cable and CertoCloud basic license

Specifications

| | CertoClav Connect |
|--------------------------------|-----------------------------|
| Article number | 8510176 |
| Chamber volume | 18 liters |
| Chamber diameter | 26 cm |
| Chamber depth | 35 cm |
| Chamber material | stainless steel 316L |
| Max. operating pressure | 2.7 bar |
| Mains connection | 230 V, 50/60 Hz |
| Heating capacity | 1300 W |
| Max. sterilization temperature | 20 °C to 140 °C, adjustable |
| Net weight | 16 kg |
| Product dimensions (W*D*H) | 44*38*54 cm |

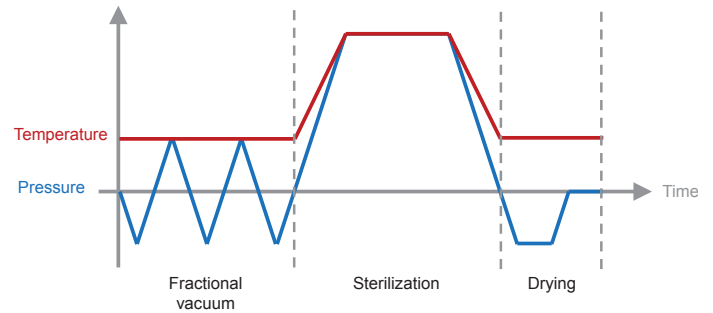
Accessories

| Article | Article number |
|----------------------------|----------------|
| Wire basket with handle | 1300149 |
| Service Set 2 | 1310186 |
| CertoServer | 8500508 |
| CertoCloud premium license | 8500212 |
| Water distiller | 8500482 |

factory calibration possible.

Horizontal laboratory autoclaves

Benefits at a glance



Our horizontal autoclaves are front-loading, bench-top autoclaves available in three sizes with chamber capacities ranging from 12 to 45 liters. Compact on the outside but with ideal chamber capacities inside. Each size has an optimal loading capacity for most DURAN® (Schott) laboratory bottles.

Our horizontal laboratory autoclaves are class B steam sterilizers. The air is removed from the sterilization chamber repeatedly with a fractionated pre-vacuum. This repeated removal of air from the sterilization chamber, prior to the actual sterilization, allows the steam to have a sterilizing effect through packaging, even in hollow bodies.



The sterilization chamber is made of corrosion-resistant, electropolished stainless steel. A steam generator, separate from the sterilization chamber, is incorporated in the housing. This has numerous advantages:

- no heating elements or reservoir for waste water inside the chamber
- in conjunction with the stand-by pre-heating function, only 10 minutes heating time is required to reach 121 °C with an empty chamber
- improved air removal by suppressing the air to the bottom
- quicker cooling, as there is neither hot water in the chamber, nor does the separate steam generator need to be cooled
- after cooling, steam is immediately available for the next sterilization cycle



Only a power supply is required for these stand-alone devices. They have integrated water tanks for fresh and wastewater, with a tank volume of 2 to 5 liters, depending on the model. The tanks are easy to clean and disinfect.



CertoClav Vacuum Pro 12 & 22

The All-In-One Autoclaves

Thanks to the preheatable chamber, cooling-ventilation, and vacuum pump, the laboratory autoclaves of the CertoClav Vacuum Professional series makes short cycle times of approx. 20 minutes possible, including drying time. Due to the intelligent combination of vacuum, pressure and steam, the CertoClav Vacuum Pro 12 and CertoClav Vacuum Pro 22 are suitable for solids of all materials as well as hollow bodies. The additional media sensor guarantees a complete sterilization of liquids such as culture media.

The 7-inch, robust, high-resolution touchscreen, the CertoTouch, offers an intuitive operation. All operating steps are explained with training videos directly on the CertoTouch. The autoclaves can be connected to the free CertoCloud. This offers fully automatic logging, remote maintenance and notification function for PC, tablet or smartphone. This allows maintenance personnel to be notified by e-mail or SMS.

Key features

- 11 preinstalled programs, freely editable
- up to 50 user-definable programs in 3 different types (solid, liquid, test) can be freely created
- vacuum pump *Made in Germany*
- flexible media sensor PT1000
- water quality sensor
- 7" touchscreen with video assistant
- automatic documentation
- RS232, RS485, USB, SD card
- ethernet, LAN, WiFi
- cloud connection
- GMP/GLP compliant

With its predefined standard programs, repeat function, automatic documentation and short sterilization cycles, the laboratory autoclaves CertoClav Vacuum Pro 12 und CertoClav Vacuum Pro 22 make everyday laboratory work much easier.

Ideal for material tests, quality control and class B program cycles, as well as for culture media preparation, sterilization of waste, sterilization of waste in disposal bags, unpackaged solids without hollow bodies, liquids, bottles, instruments, synthetic materials, rubber, textiles, packaged instruments, porous materials, and hollow bodies type A and type B (pipettes, empty glassware, vials and tubes) according to EN 13060.



Scope of delivery:

Product set CertoClav VacuumPro & CertoTouch screen, including instrument tray, power cable and CertoCloud basic license

Manufacturer's note:

A drip tray is required for autoclaving liquids!

Specifications

| | CertoClav VacPro 12 | CertoClav VacPro 22 |
|--------------------------------|----------------------|----------------------|
| Article number | 8500487 | 8500489 |
| Chamber volume | 12 liters | 22 liters |
| Fresh water tank volume | 2.3 liters | 4.5 liters |
| Waste water tank volume | 2.1 liters | 4 liters |
| Chamber diameter | 20 cm | 25 cm |
| Chamber depth | 36 cm | 45 cm |
| Chamber material | stainless steel 304L | stainless steel 304L |
| Max. operating pressure | 230 kPa | 230 kPa |
| Mains connection | 220 V, 50/60 Hz | 220 V, 50/60 Hz |
| Heating capacity | 2400 W | 2400 W |
| Max. sterilization temperature | 134 °C | 134 °C |
| Net weight | 51 kg | 55 kg |
| Product dimensions (W*D*H) | 50*61*43 cm | 50*65*43 cm |

factory calibration possible.

Accessories recommendation

| Article | Article number |
|----------------------------------|----------------|
| CertoServer | 8500508 |
| CertoCloud premium license | 8500212 |
| Water distiller | 8500482 |
| Tray Set with 3 trays | see p. 18 |
| Wire basket | see p. 18 |
| Drip tray | see p. 18 |
| Service Set 3 | 8500495 |
| Bacteria filter | 1300705 |
| Log printer | 1300187 |
| Label printer | 8500502 |
| Direct thermal labels | 8500507 |
| Barcode scanner | 8500503 |
| Template for IQ/OQ documentation | 8500513 |
| IQ/OQ qualification | 8500515 |



icanCLAVE STE-45-T & CertoAssist - SET

The extra large All-In-One autoclave

Due to its predefined standard programs, automatic documentation and short sterilization cycles, the icanCLAVE autoclave model STE-45-T makes everyday laboratory work much easier. The preheatable chamber, the air-cooling system and the vacuum pump, make a fast sterilization cycle including drying of about 20 minutes possible.

The intelligent combination of vacuum, pressure and steam makes the icanCLAVE STE-45-T suitable for solids of all materials and the additional media sensor (PT1000) guarantees the complete sterilization of liquids, such as culture media.

Key features

- 8 preinstalled programs
- vacuum pump *Made in Germany*
- flexible media sensor PT1000
- CertoAssist touchscreen
- automatic documentation
- RS232, RS485, USB, SD card
- ethernet, LAN, WiFi
- cloud connection
- GMP/GLP compliant

Scope of delivery:

Product set of icanCLAVE autoclave model STE-45-T & CertoAssist touchscreen, including instrument tray, power cable and CertoCloud basic license

Manufacturer's note:

A drip tray is required for autoclaving liquids!

In addition, the icanCLAVE STE-45-T is equipped with the CertoAssist, an extra-large, robust and high-resolution touchscreen. All operating steps are explained directly on the screen with videos. As soon as the autoclave is connected to the Internet via WLAN, it can be connected to the CertoCloud.

Ideal for the sterilization of culture media in bottles and for class B program cycles, as well as for sterilization of waste, sterilization of waste in disposal bags, unpackaged solids without hollow bodies, liquids, bottles, instruments and synthetic materials.



Specifications

| | icanCLAVE Autoklav Modell STE-45-T |
|--------------------------------|------------------------------------|
| Article number | 8500610 |
| Chamber volume | 45 liters |
| Fresh water tank volume | 5 liters |
| Waste water tank volume | 3 liters |
| Chamber diameter | 31.9 cm |
| Chamber depth | 61.7 cm |
| Chamber material | stainless steel 304L |
| Max. operating pressure | 230 kPa |
| Mains connection | 220 V, 50/60 Hz |
| Heating capacity | 2400 W |
| Max. sterilization temperature | 134 °C |
| Net weight | 120 kg |
| Product dimensions (W*D*H) | 64*84*56 cm |

Accessories

| Article | Article number |
|----------------------------|----------------|
| CertoServer | 8500508 |
| CertoCloud premium license | 8500212 |
| Water distiller | 8500482 |
| Tray Set with 3 trays | 8500404 |
| Wire basket | 8500406 |
| Drip tray | 1300768 |
| Service Set 5 | 8500407 |
| Bacteria filter | 1300858 |
| Log printer | 1300187 |
| Label printer | 8500502 |
| Direct thermal labels | 8500507 |
| Barcode scanner | 8500503 |

factory calibration possible.

High quality services

CertoClav is not only known for its autoclaves but also for the quality of the support and supplementary services. Our services range from giving advice on sterilization processes and finding the most suitable autoclave to after-sales support. We also can carry out a complete qualification and validation for CertoClav devices on request.

Inspection & Maintenance package

For all CertoClav models

Article number 1250000

CertoClav autoclaves are exemplary for a long-lasting and productive use. We recommend regular maintenance intervals to ensure constant availability of the device over its entire lifecycle. With our inspection and maintenance package, this can be achieved very easily and cost-efficiently. During maintenance, all mechanical, electrical and electronic components are subjected to a visual and a functional inspection and are replaced if necessary. The inspection and maintenance package includes an initial check, a non-binding cost estimate, an electrical safety test, a pressure test, a function test with temperature check and an inspection of the safety equipment.

Ex factory validation of the sterilization cycle

For all vertical CertoClav models

Article number 1250001

Temperature control with a certified EBRO data logger including a detailed temperature protocol.

Modification CV EL

CertoClav EL

Article number 8581000

Upgrade of your CertoClav EL to a MultiControl with the MC2 control unit. The base is converted to a MultiControl with a PT100 temperature sensor, the lid is converted to a MultiControl lid with pressure control valve and MultiControl steam release spigot.

Repair service

Article number 1300000

In the event of a problem, you can completely rely on our repair service. Our employees are always ready to help. Only original CertoClav spare parts are used for repairs. Repairs are carried out exclusively by our qualified technicians.

IQ/OQ qualification

CertoClav VacPro 12 & 22

Article number 8500515

Ex factory validation including documentation.



Wide range of accessories

For optimal workflow

Wire basket with handle

The wire basket for convenient handling of autoclaving goods like solids, waste in bags, instruments, bottles, liquids or the like.

| Accessory for | Material | Diameter | Height | Article number |
|------------------------|-----------------|----------|---------|----------------|
| Aluminum models | stainless steel | ø 23 cm | 17 cm | 8583010 |
| Stainless steel models | stainless steel | ø 25 cm | 22.5 cm | 1300149 |



Instrument tray

The stable instrument tray with three feet and minimum water level indicator can also be used as a base plate for a wire basket or bottles. When purchasing a vertical autoclave, an instrument tray is already included in the scope of delivery.

| Accessory for | Material | Diameter | Height | Article number |
|------------------------|-----------------|-----------|--------|----------------|
| Aluminum models | aluminum | ø 22.5 cm | 4 cm | 1252203 |
| Stainless steel models | stainless steel | ø 25 cm | 4 cm | 1300155 |



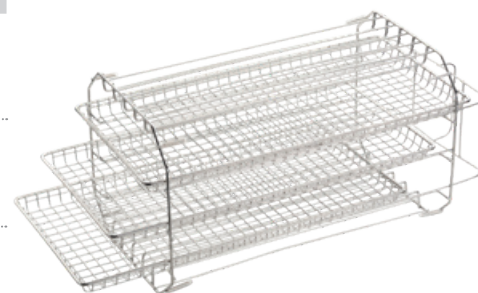
1252203

1300155

Tray Set with 3 trays

The tray set with 3 trays made of stainless steel is suitable for nutrient media, instruments, material testing, etc. When purchasing a horizontal autoclave, a tray set is already included in the scope of delivery.

| Accessory for | Material | | Width | Depth | Height | Article number |
|--------------------|-----------------|---------------|---------|----------|----------|----------------|
| VacPro 12 | stainless steel | Rack | 16.8 cm | 33.5 cm | 16.6 cm | 8500479 |
| | | Trays | 13.8 cm | 29.5 cm | 1.5 cm | |
| | | usable height | 3 cm* | 3 cm** | 3 cm** | |
| VacPro 22 | stainless steel | Rack | 20 cm | 40 cm | 20 cm | 8500481 |
| | | Trays | 17 cm | 35 cm | 1.6 cm | |
| | | usable height | 3 cm* | 4 cm** | 4 cm** | |
| icanCLAVE STE-45-T | stainless steel | Rack | 25.9 cm | 46 cm | 26 cm | 8500404 |
| | | Trays | 22.6 cm | 51 cm | 1.7 cm | |
| | | usable height | 6.3 cm* | 5.5 cm** | 5.5 cm** | |



*upper tray
**centre and bottom tray

Wire basket

The wire basket for convenient handling of autoclaving goods like solids, waste in bags, instruments, bottles, liquids or the like.

| Accessory for | Material | Width | Depth | Height | Article number |
|--------------------|-----------------|---------|---------|---------|----------------|
| VacPro 12 | stainless steel | 14.6 cm | 30 cm | 12.5 cm | 8500401 |
| VacPro 22 | stainless steel | 17.1 cm | 38 cm | 15.6 cm | 8500403 |
| icanCLAVE STE-45-T | stainless steel | 22.5 cm | 51.1 cm | 20.6 cm | 8500406 |



Drip Tray

The drip tray is used to prevent chamber contamination by boiling over of liquids such as agar-agar, and as a base plate for bottles.

| Accessory for | Material | Width | Depth | Height | Article number |
|--------------------|-----------------|---------|---------|--------|----------------|
| VacPro 12 | stainless steel | 14.2 cm | 29.8 cm | 1.6 cm | 1300765 |
| VacPro 22 | stainless steel | 16.7 cm | 37.8 cm | 1.6 cm | 1300767 |
| icanCLAVE STE-45-T | stainless steel | 22.2 cm | 51.1 cm | 1.6 cm | 1300768 |



SET wire basket & drip tray

The SET includes a wire basket and a drip tray.

| Accessory for | Material | Width | Depth | Height | Article number |
|--------------------|-----------------|---------|---------|---------|----------------|
| VacPro 12 | stainless steel | 14.6 cm | 12.5 cm | 30 cm | 8500408 |
| VacPro 22 | stainless steel | 17.1 cm | 15.6 cm | 38 cm | 8500410 |
| icanCLAVE STE-45-T | stainless steel | 22.5 cm | 20.6 cm | 51.1 cm | 8500411 |



Exhaust filtration

Condensation vessel incl. filter & hose

| Accessory for | Article number |
|--------------------------------|--|
| MultiControl MultiControl 2 | The pre-assembled exhaust filter consists of a condensation vessel, a heat-resistant exhaust hose and a High Flow Tetpor II Vent filter with a filtration capacity of 0.01 micron. 8582010 |



Condensation vessel incl. hose

| Accessory for | Article number |
|---------------------------------|--|
| Vertical models, except Connect | The plastic condensation vessel is used to collect the condensation water. The vessel has a capacity of 5 liters and is supplied with a lid, a hose attachment, a heat-resistant exhaust hose made of silicone (length of 1 m) and two screw clamps. 8582020 |



Exhaust hose

| Accessory for | Article number |
|---------------------------------|---|
| Vertical models, except Connect | The exhaust hose is made of silicone and is supplied with 2 screw clamps. The hose is temperature resistant up to + 180 °C and has a length of 1 m. 8582016 |

Filter cartridge

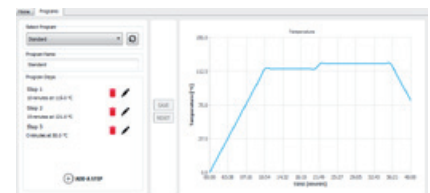
| Accessory for | Article number |
|----------------|---|
| Exhaust filter | Replacement filter cartridge for the exhaust filter. The High Flow Tetpor II Vent filter with a water-repellent PTFE membrane ensures particle separation down to 0.01 micron in steam. 8582011 |



Process support

PC software professional version

| Accessory for | Article number |
|--------------------------------|--|
| MultiControl MultiControl 2 | With the professional version of the MultiControl PC Software it is possible to programm multi-step cycles (time and temperature), which can also be imported into the MC2 control unit. The PC software is available as download. The license use is unlimited. 8500210 |



Documentation & Quality Management

| Log printer | | |
|--|--|----------------|
| Accessory for | | Article number |
| MultiControl MultiControl 2 VacPro 12-22 icanCLAVE STE-45-T | The external log printer is used to document and archive the sterilization cycles during sterilization. The protocol is printed on thermal paper. Includes power supply unit and data cable. Dimensions: 12x11x20cm (WxHxD) Weight: 1 kg | 1300187 |



| Thermal paper | | |
|---------------|---|----------------|
| Accessory for | | Article number |
| Log printer | The thermal paper is manufactured without the use of bisphenol A (BPA-free) and has a shelf life of up to 7 years when stored correctly. The 10 rolls enable a smooth, uninterrupted daily laboratory routine. Roll diameter: 58 mm Roll length: 40 m | 8500496 |



| Label printer | | |
|------------------------|---|----------------|
| Accessory for | | Article number |
| VacPro 12 VacPro 22 | The external label printer is used for labeling and tracing the sterilization items. The printer prints the expiration date and protocol information on a self-adhesive label. Includes power supply and data cable. Dimensions: 12x19x21cm (WxHxD) Weight: 1.75 kg | 8500502 |



| Direct thermal labels | | |
|-----------------------|--|----------------|
| Accessory for | | Article number |
| Label printer | The replacement thermal label roll is equipped with 1000 white direct thermal labels. Our direct thermal labels are made of paper with a Top Coat coating for very good readability of the barcode and are removable. Roll diameter: 80 mm Roll length: 1 roll of 1000 pcs | 8500507 |



| Barcode scanner | | |
|------------------------|--|----------------|
| Accessory for | | Article number |
| VacPro 12 VacPro 22 | The wired barcode scanner allows quick access to all sterilization protocols of the sterilization item by scanning the barcode. With the scanner you can easily and quickly scan all common 2D and 1D barcodes. Dimensions: 17x7x10cm (WxHxD) Weight: 0.2 kg | 8500503 |



| Template for IQ/OQ documentation | | |
|----------------------------------|---|----------------|
| Accessory for | | Article number |
| VacPro 12 VacPro 22 | In addition to a factory IQ/OQ qualification, we also offer this template on a USB flash drive for documentation. | 8500513 |



Water supply

High-quality, clean and demineralized water is particularly important during autoclaving. Poor water quality leads to deposits in the autoclave chamber. To help you prevent that we offer a water treatment system for our autoclaves. The distillation unit is, like our autoclaves, a location-independent device. All it need is a power supply. The installation effort is minimal. To remove bacteria and viruses, the device distills 1.5 liters of water fully automatically within one hour by steam distillation. Before the water drips into the collection can, an activated carbon filter absorbs volatile organic compounds.



| Water distiller | |
|-----------------|---|
| Accessory for | Article number |
| All models | Power supply: 230 VAC, 50 Hz Power: 750 W Chamber volume: 3 liters Dimensions: 29x39x29cm (WxHxD) Gewicht: 3.5 kg |
| | 8500482 |

Digital Quality Management

| CertoCloud premium license | |
|---|---|
| Accessory for | Article number |
| Connect VacPro 12-22 icanCLAVE STE-45-T | The CertoCloud is a browser-based management software for our autoclaves. Unlocks the premium functions of the autoclave: <ul style="list-style-type: none"> • Unlimited users • Unlimited real-time monitoring • Configuration possibilities of the autoclave • SMS Notifications • Online memory for 100,000 protocols directly at the autoclave • Remote Support • Seamless traceability of batches via CertoTrace |
| | 8500212 |

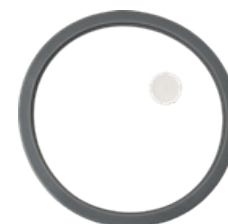


| CertoServer | |
|-------------------------|---|
| Accessory for | Article number |
| Connect VacPro 12-22 | CertoServer is a lab-internal private cloud without internet connection. The CertoServer only needs to be integrated into the laboratory network. Benefits: <ul style="list-style-type: none"> • All data remains within the company network • With pre-installed autoclave management software • Local server for management of and communication with the autoclave • Creation of automatic backups • Start at the push of a button Dimensions: 11.6x11.2x4.5cm (WxHxD) Weight: 0.5 kg |
| | 8500508 |



Wear parts

| Service Set 1 | | |
|------------------------|--|----------------|
| Wear part for | | Article number |
| Aluminum models | The Service Set 1 for our vertical aluminum laboratory autoclaves includes one gasket each for the lid, the steam release spigot, the manometer and the pressure control valve and a steam release valve. The gaskets should be replaced every 2 years. | 1250499 |
| Service Set 2 | | |
| Wear part for | | Article number |
| Stainless steel models | The Service Set 2 for our vertical stainless steel laboratory autoclaves includes one gasket each for the lid, the steam release spigot, the manometer and the pressure control valve and two steam release valves. The gaskets should be replaced every 2 years. | 1310186 |
| Service Set 3 | | |
| Wear part for | | Article number |
| VacPro 12-22 | The Service Set 3 contains a door gasket, a safety valve and a bacteria filter. The gasket and the safety valve should be replaced annually. The bacteria filter should be changed every 300 cycles and is also available separately. The Service Set 3 should only be installed by trained technicians. | 8500495 |
| Service Set 5 | | |
| Wear part for | | Article number |
| icanCLAVE STE-45-T | The Service Set 5 contains a door gasket and a bacteria filter. The door gasket should be replaced annually. The bacteria filter should be changed every 300 cycles and is also available separately. The Service Set 5 should only be installed by trained technicians. | 8500407 |
| Bacteria filter | | |
| Wear part for | | Article number |
| VacPro 12-22 | The bacteria filter should be changed every 300 cycles. | 1300705 |
| icanCLAVE STE-45-T | | 1300858 |



Spare parts

If you have questions about our autoclaves, need spare parts or help with the installation, please contact us!

Training & Education

We offer comprehensive technical training courses and training for our autoclaves. The courses are intended for technicians of authorized dealers. The training courses are mainly held online, but we also offer trainings at our company headquarters near Linz if requested. Upon successful completion, the course participants receive a certificate from us. If you are interested, please contact us for further information.

For further questions, we are here to help you any time!

For further information, please visit www.certoclav.com or contact our office directly.

Contact details

Address

CertoClav Sterilizer GmbH
Peintner Straße 10
A-4060 Leonding

Phone

+43 732 674 278

Fax

+43 732 674 278 20

E-mail

office@certoclav.com

Commercial register

Landesgericht Linz
FN122912d

VAT-No.

ATU22821702

CEO

Michael Dirix

Production Management & Customer Service

Anita Leibetseder
leibetseder@certoclav.com

Purchasing & Quality Management

Klaus David
david@certoclav.com

Notes

The warranty conditions are described in the respective certificates.

Deliveries are made according to our terms and conditions, which can be seen at: <http://www.certoclav.com>

Images may differ insignificantly from the product. Illustrations are not true to scale.

Imprint

© CertoClav Sterilizer GmbH

The illustrations, information and technical data contained in this publication correspond to the status of printing. The author accepts no liability for the topicality, correctness, completeness or quality of the information provided.

All technical data apply exclusively to unloaded devices in standard version at an ambient temperature of 22 ± 3 °C and a mains voltage fluctuation of ± 10 %. We reserve the right to make technical changes.

CERTOCLAV

Address

CertoClav Sterilizer GmbH
Peintner Straße 10
A-4060 Leonding

Phone

+43 732 674 278

Fax

+43 732 674 278 20

E-mail

office@certoclav.com



www.certoclav.com

01.2022