

Allsheng



Hangzhou Allsheng Instruments Co., Ltd.

Building 1&2, Zheheng Science Park, Zhuantang Town, Hangzhou City, China

310024

(0086)-571-88948289 88802738 81958906 87205575

(0086)-571-88948289 87205673

info@allsheng.com sales@allsheng.com

www.allsheng.com www.allsheng.com.cn

First Print in October 2018



Allsheng

Catalogue
2018-2019

ALL FOR LIFE SCIENCE

Hangzhou Allsheng Instruments Co., Ltd.

– All For Life Science –

About ALLSHENG



Hangzhou Allsheng Instruments Co.,Ltd. was established in 2006, Allsheng company is a professional engaged in laboratory instrument, molecular biology instrument and medical equipment for R&D, production, sales and services enterprises. Our company is located in Hangzhou city, China and employs more than 130 persons.

With strong R&D and senior management team, Allsheng products win a good reputation from the market. Benefit from its unique design and superior performance, you can easily find Allsheng's products in Europe, U.S.A., Southeast Asia, Korea, Japan, the Middle East, and so on.

Our Products Focused On:

Biological Sample Pre-Processing Equipments

Nucleic Acid Purification System, Homogenizer System, and Plate Sealer etc.

Molecular Biology Instruments

Micro-Spectrophotometer, Plate Reader and Washer, FISH Hybridization, Fluorometer, Isothermal Fluorescence PCR, Test Strip Reader, etc.

Laboratory Instruments

Dry Bath Incubator, Thermo Shaker Incubator, Orbital Shaker, Centrifuge, Bacti-Cinerator and Beads Sterilizer, Sample Concentration etc..

Medical Equipment

Gel Card Incubator and Centrifuge, Elisa Reader and Washer

Our Advantage:

Customization

Complete certification and patent designed

Compliance with advanced world standards and requirements

Superior after-sale services

ISO9001 / ISO13485 and CE certificates

PRODUCT CATALOG



Biological Sample Pre-Processing Equipments

Bioprep-6/Bioprep-24/Bioprep-24R Homogenizer	2
Auto-Pure96/Auto-Pure24 Nucleic Acid Purification System	7
Auto-Pure32A/Auto-Pure20A/ Auto-Pure20B Nucleic Acid Purification System	9
Auto-Pure10B/10BW/10BS/16A Nucleic Acid Purification System	13
SealBio-2 Semi Automated Plate Sealer	15

Molecular Biology Instruments

Nano-100/Nano-300/Nano-400A/Nano-500 Micro-Spectrophotometer	18
Fluo-100 Fluorometer	23
Gene-8C/Gene-8C2 Isothermal Fluorescence PCR	25
AMR-100 Microplate Reader	27
FlexA-200 Microplate Reader	29
APW-200 Microplate Washer	32
TSR-100/TSR-200 Test Strip Reader	33
TDH-500 Hybridization System	36

Laboratory Instruments

Centrifuge Series

iCEN-24/iCEN-24R High Speed Centrifuge	39
Mini-15K High Speed Mini-Centrifuge	41
Mini-6KC/Mini-6KS/Mini-6KT and Mini-6K/Mini-7K/Mini-10K Mini-centrifuge	42
Mini-P25/MPC-P25 Mini-Plate Centrifuge	44

Dry Bath Incubator Series

IB-10HL/IB-20HL Dry Bath Incubator	46
MinT Series Dry Bath Incubator	48
MinT-H2C/MinT-H3 Dry Bath Incubator	49
K30 Dry Bath Incubator	51
MK-10/MK-20 Dry Bath Incubator	52

Mk200 Dry Bath Incubator	54
MK2000 Dry Bath Incubator	56

Thermo Shaker and Incubator

MS-100/MS-100 Thermo Shaker Incubator for Tubes	58
TMS-200/TMS-300 Thermo Shaker Incubator for Tubes	59
MB100-2A/MB100-4A Thermo Shaker for Microplate	61
MK100-2A/MK100-4A Incubator for Microplate	61
MX100-4A Microplate Shaker	62
MTV-1 Mini Vortex	63
MTV-100 Multi-Tube Vortex	64

Orbital Shaker

OS-100/OS-200 Orbital Shaker	65
------------------------------	----

Sample Concentration

MD200 Series Sample Concentration	66
KD200 Sample Concentration	67
WD-12 Sample Concentration	68

Sterilizer

HM-3000 Series Bacti-Cinerator Sterilizer	70
GBS-5000 Series Glass Bead Sterilizer	71

Others

MiniT Biological Indicator Incubator	72
Mini-ES Mini-Electrophoresis System	73
K37-24 Gel Card Incubator	73
TD2-12/TD2-24 Gel Card Centrifuge	74

I

Biological Sample Pre-Processing Equipments

01 Bioprep-6/Bioprep-24/Bioprep-24R Homogenizer

Description

Fast, effective and reproducible homogenization of a wide range of samples, including tissues and cells hard to lyse. They also own extraordinary power for the processing of even impact resistant samples such as bones or cartilage. The Bioprep-6 and Bioprep-24 are ideal solutions for releasing DNA, RNA, Proteins, Enzymes, etc. from very tough samples while still retaining molecular integrity

Highlights

1. "3D Rotating High Speed Motion" for quick disruption of those fibrous tissues and resistant cells
2. A wide range of rotation speed settings from 4 to 7 m/s
3. Brushless motor realizing no brush particle generation
4. Easy to remove sample tube holder and fix sample tubes
5. Easy to monitor the disruption process through the clear lid
6. Simultaneously homogenization:

Bioprep-6	6*2ml tubes or 2*5ml tubes
Bioprep-24	24*2ml tubes or 12*5ml tubes
Bioprep-24R	24*2ml tubes or 12*5ml tubes
7. Disposable tubes ensure no threat of cross-contamination or sample degradation
8. The Bioprep-6 and Bioprep-24/24R vigorously and uniformly shakes the tubes providing an efficient, consistent, high-yield and quality homogenization usually in 35s or less

Bioprep-6 homogenizer

1. Built upon the innovative design and designed for personal use
2. Broad performance range -- speed settings from 4 to 7 m/s
3. Small footprint -- requires minimal bench space
4. Holds 6x0.5ml/1.5ml/2ml or 2x5ml tubes
5. Patent design for the damping institutions and hold ultra quiet operation, even at the highest speed running



Bioprep-6



Bioprep-24



Bioprep-24R

01 Bioprep-6/Bioprep-24 Homogenizer

How to use beads

1.4mm & 2.8mm Ceramic Beads	3mm & 6mm Metal Beads	1mm & 3mm Glass Beads
Ideal for soft animal, plant or human tissues: • brain • liver • skin • leaves • gonad • muscle, etc.	Ideal for any hard tissue types: • hair • teeth • bones • seeds • corn • rice • nail, etc.	Ideal for microorganisms Optimal for: • spores • fungi • yeast • e-coli, etc.
We will offer the Lysing Kits which are available with Plastic or Stainless Steel pre-filled sample tubes in future		

01

Holder and Adapter

Holder for 6 x 2.0ml and for 2 x 5.0ml
FOR Bioprep-6



Holder and 2-3 x 2.0ml Adapter



Holder and 2-5.0ml Adapter



02

Rotor Adapter

Rotor for 24 x 2.0ml / Rotor for 12 x 5.0ml
FOR Bioprep-24 / Bioprep-24R



24 x 2.0ml rotor



12 x 5.0ml rotor

03

Applications:

Any researcher who requires genomic DNA, total RNA or recombinant protein as a starting material will benefit from the unit system.

- Northern blot analysis, qPCR and microarrays
- Optimization of recombinant protein expression
- Library synthesis and Southern blots
- RT-PCR and differential display
- Pathogen screening of soil or water
- Environmental surveys
- Verification of food safety

04

Typical Samples:

1. Bone, brain, tumors
2. Bacteria gram + or -
3. Yeast, fungi, spores
4. Seeds, roots
5. Feces, swabs
6. Soil, sediments

05

Grinding tubes

1. Bioprep-6: Simultaneous processing 6*2ml/1.5ml/0.5ml tubes or 2*5ml tubes
2. Bioprep-24 / Bioprep-24R: Simultaneous processing 24*2ml/1.5ml/0.5ml tubes or 12*5ml tubes
3. The grinding tubes must be with high toughness and low temperature resistance

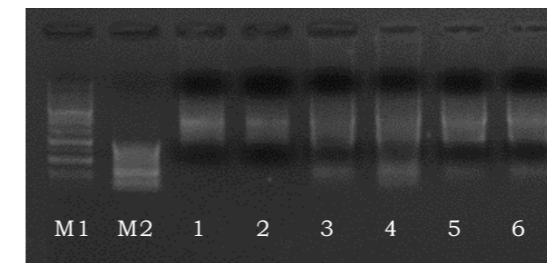
Bioprep-24R refrigerated homogenizer

Bioprep-24R refrigerated homogenizer has the internal compressor which was upgraded on the basis of normal Bioprep-24 homogenizer. Partial active ingredients will be negatively affected when use the conventional methods to homogenize most of the soft or sensitive samples under room temperature, while the low temperature can prevent this situation. Therefore the cooling technique is the key effective method to save the complete sample. In addition, the sample will change more crisp which can be homogenized easily and efficiently. Thus, Bioprep-24R refrigerated homogenizer plays an important role in the extraction progress of RNA, DNA and the protein activity determination

1. The lowest temperature: -10°C
2. Internal turbo fan in the homogenized cavity which can keep the temperature uniformity within 2°C
3. Environment friendly for compressor
4. Effectively prevent the reduction of sample activity which caused by the high temperature with the refrigerated function when extracting the RNA, Protein etc
5. Has the dry homogenization and wet homogenization function.

Extraction results

Animal tissue extraction result

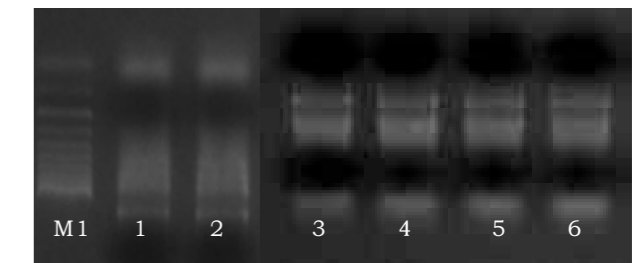


Remark: M1 was 10kb marker; M2 was 1000kb marker; Line 1 and 2 were room temperature homogenization; Line 3 and 4 were refrigerated homogenization which were homogenized directly when the temperature cooled to 0°C; Line 5 and 6 were refrigerated homogenization which cooled to 0°C and kept 5 min before homogenization.

No.	260nm	280nm	260/280	C:ng/ul
1	3.872	1.963	1.972	154.874
2	4.219	2.073	2.035	168.772
3	16.65	8.177	2.036	665.989
4	20.379	10.15	2.008	815.151
5	17.433	8.741	1.994	697.308
6	13.726	6.792	2.021	549.059

According to the RNA concentration and electrophoretogram above, the results which were homogenized directly when the temperature cooled to 0°C by the refrigerated homogenizer is much better than in room temperature

Plant sample extraction result



Remark: M1 was 1000bp marker; Line 1 was vegetable leaf which was treated by liquid nitrogen before homogenization; Line 2 was vegetable leaf treated by refrigerated homogenization; Line 3 was rice which was treated by liquid nitrogen before homogenization; Line 4 was rice treated by refrigerated homogenization; Line 5 was corn leaf which was treated by liquid nitrogen before homogenization; Line 6 was corn leaf treated by refrigerated homogenization.

No.	260nm	280nm	260/280	C:ng/ul
1. liquid-N2	26.371	16.177	1.63	1054.852
2. Bioprep-24R	20.668	12.285	1.68	826.79
3. liquid-N2	2.143	1.24	1.73	85.741
4. Bioprep-24R	2.014	1.1058	1.82	80.6227
5. liquid-N2	1.911	1.114	1.72	76.447
6. Bioprep-24R	1.898	1.045	1.82	75.9924

According to the RNA concentration and electrophoretogram above, the results which were homogenized by refrigerated homogenizer and treated by liquid nitrogen were similar, while for some soft samples, the results which treated by liquid nitrogen were better because of the sample became more crisp after the treatment by liquid nitrogen

01 Bioprep-6/Bioprep-24/Bioprep-24R Homogenizer

Specification			
Type	Bioprep-6	Bioprep-24	Bioprep-24R (Cooling Function)
Temperature range	—	—	-10℃~40℃
From RT. to 0℃	—	—	< 30min
Temperature uniformity	—	—	± 2℃
Cooling method	—	—	Compressor refrigeration
Speed Range (m/s)	4.00m/s~7.00m/s increment 0.05m/s	4.00m/s~7.00m/s increment 0.05m/s	4.00m/s~7.00m/s increment 0.05m/s
Speed Range (rpm)	2500rpm -- 4350rpm increment 10rpm	2430rpm -- 4260rpm increment 10rpm	2430rpm -- 4260rpm increment 10rpm
Display	LCD	OLED	OLED
Cycle Duration	1s -- 90s, increment 1s	1s -- 90s, increment 1s	1s -- 90s, increment 1s
Pause time	1s -- 90s, increment 1s	1s -- 90s, increment 1s	1s -- 90s, increment 1s
Cycle	10	10	10
Programmable	1	50	50
Samples	6 x 2ml/1.5ml or 2 x 5ml	24x 2ml/1.5ml or 12x 5ml	24x 2ml/1.5ml or 12x 5ml
Tube Type	grinding tube	grinding tube	grinding tube
Acceleration Time	< 2s	< 4s	< 4s
Noise	< 65 db	< 70 db	< 70 db
Wearing part	No	No	No
Adapter	Holder for 2ml/5ml (Standard)	Rotor for 2ml x 24 (Standard) or Rotor for 5ml x 12 (Optional)	
Power	150W	150W	150W
Dimensions (W×D×H)	354mm×218mm×206mm	280mm×360mm×385mm	300mm×500mm×360mm
Weight (kg)	8.9 kg	25.0 kg	40.0 kg
Power Supply	AC100~240V, 50/60Hz	AC100~240V, 50/60Hz	AC100~240V, 50/60Hz

Ordering information		
No.	Code	Description
01	AS-13010-00	Bioprep-24 Homogenizer AC100~240V, 50/60Hz
02	AS-13020-00	Bioprep-6 Homogenizer AC100~240V, 50/60Hz
03	AS-13030-00	Bioprep-24R Refrigerated Homogenizer
04	AS-13011-01	Rotor for 24 x 2.0ml (Bioprep-24/Bioprep-24R)
05	AS-13011-02	Rotor for 6 x 5.0ml (Bioprep-24) --Stop production
06	AS-13011-30	Rotor for 12 x 5.0ml (Bioprep-24/Bioprep-24R)
07	AS-13021-01	Holder for tubes (Bioprep-6)
08	AS-13021-02	Adapter for 3 x 2.0ml (Bioprep-6)
09	AS-13021-03	Adapter for 5.0ml (Bioprep-6)
10	AS-13021-04	DC24V, 6A Adapter (Bioprep-6)
11	AS-13011-03	2.0ml Grinding tube
12	AS-13011-04	5.0ml Grinding tube
13	AS-13011-05	Φ1.4mm Ceramic beads
14	AS-13011-06	Φ2.8mm Ceramic beads
15	AS-13011-07	Φ3mm Metal beads
16	AS-13011-08	Φ6mm Metal beads
17	AS-13011-09	Φ0.2mm Glass beads
18	AS-13011-10	Φ0.5mm Glass beads
19	AS-13011-11	Φ1.0mm Glass beads
20	AS-13011-12	Φ3.0mm Glass beads
21	AS-13011-13	Φ1.4mm Metal beads
22	AS-13011-14	Φ4.0mm Metal beads
23	AS-13011-15	Φ2.8mm Zirconium carbonate

02 Auto-Pure96/Auto-Pure24 Nucleic Acid Purification System



Auto-Pure96/Auto-Pure24

Products introduction

Auto-Pure series products is an automated system for purifying DNA, RNA, proteins and cells from a variety of sample materials, such as blood, cells and tissue samples. The Auto-Pure purification technology is automated and enables high-speed, high-quality processing with no cross-contamination between the samples or reagent carry-over.

The following automated instruments platforms are available for different processing requirements:

Auto-Pure96

1. Purification of 96 samples in one run
2. Processing volume of 50-1000ul with 2.2ml Deep Well 96 plate

Auto-Pure24

1. Purification of 24 samples in one run
2. Processing volume of 50-10000ul with 14.6ml Deep Well 24 plate

Auto-Pure32A

1. Purification of 32 samples in one run
2. Processing volume of 10-1000ul with 2.2ml Deep Well 96 plate

Auto-Pure20A

1. Purification of 20 samples in one run
2. Processing volume of 50-3000ul with 4ml-tube strips for Auto-Pure20A

Auto-Pure20B

1. Purification of 20 samples in one run
2. Processing volume of 50-5000ul with 6.5ml-tube strips for Auto-Pure20B

Auto-Pure16A

1. Purification of 16 samples in one run
2. Processing volume of 10-1000ul with 2.2ml Deep Well 96 plate

Auto-Pure10B

1. Purification of 10 samples in one run
2. Processing volume of 50-5000ul with 6.5ml-tube strips for Auto-Pure10B

Auto-Pure10BS (with dry bath)

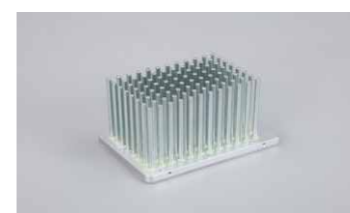
1. Purification of 10 samples in one run
2. Processing volume of 50-5000ul with 6.5ml-tube strips for Auto-Pure10B

Auto-Pure10BW (without heating for lysis and elution)

1. Purification of 10 samples in one run
2. Processing volume of 50-5000ul with 6.5ml-tube strips for Auto-Pure10B

01

High throughput, fast extraction and modular design can meet variety of needs by one unit.



Magnetic head for Auto-Pure96



Auto-Pure96 consumable



Magnetic head for Auto-Pure24



Auto-Pure24 consumable

02

Operational advantages

1. High-throughput:
Auto-Pure96 can process 96x1ml samples simultaneously
Auto-Pure24 can process 24x10ml samples simultaneously
2. Open and multiple functions design can be provided more methods for reagent optimization, and also a reliable choice
3. Touchscreen interface and easy operation, parameters can be tuned based on experimental requirements
4. Accurate temperature control system ensures stability of purification performance
5. Patent structure design with center rotary table which makes it occupies smaller area
6. Patent design for automatic loading and unloading structure of magnetic rod tip comb, which guaranteed stability and liability (Success rate >99.99%)

02

Antipollution measures

1. Avoid reagent splashing through drip shield plate and beads dried way controlled by software
2. Disposable consumables which can avoid cross contamination

04

Simple and intelligented operation

1. Front door can be opened, you can stop it at any moment which is very convenient for reagent optimization and experimental status viewing
2. Start with self-check, equipped with power-off protection
3. 8-plate identification design guaranteed their target position, even though external forces exist
4. Automatic detection in case kit missing
5. With QR code identification, special reagent can be recognized, without setting program or obtaining protocols

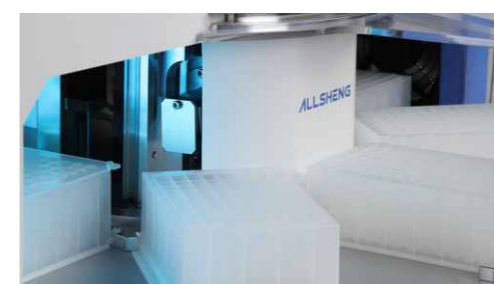


Auto-Pure96/24 the front door can be opened

04

Compatible with automated systems (Optional)

Auto-pure96/24 can be used with automatic equipment, including mechanical arm, liquid processing system, etc., which meet the demand of high-flux experiment



03 Auto-Pure32A/Auto-Pure20A/Auto-Pure20B Nucleic Acid Purification System

Description

Auto-Pure32A/Auto-Pure20A/Auto-Pure20B is a bench top device for DNA and RNA purification by using magnetic separation technology from different samples, such as blood, cultured cells or bacteria, tissues, cell-free body fluids and plant. The device is capable for using magnetic rods to transfer particles through the various purification phases of binding, mixing, washing and elution, offering a solution with minimized hands-on time. The DNA and RNA purification is of high quality and high molecular weight.

Features

1. Easily to use with 7 inch touch screen
2. Very simple operation (easy to install, operate, maintain) without computer
3. Very fast extraction protocol, 15~40 minutes / cycle depending on sample type and method
4. Universal built-in program for easy using and high purity and excellent yield of nucleic acid
5. UV lamp to avoid cross contamination
6. Open system can optimize purification proposal according to various magnetic beads kits
7. Drawer design to prevent possible injuries
8. Capable of extracting 1~20 samples or 1~32samples per run, and process samples up to 1ml, 3ml and 5ml



Auto-Pure20A/20B



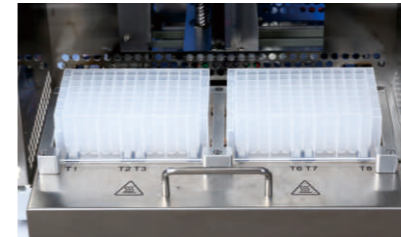
Auto-Pure32

Process samples up to 1ml, 3ml or 5ml

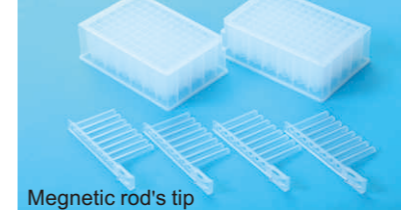
With the Auto-Pure series can process up to 32 samples per run when the working volume is up to 1ml. With the ability to change the instrument configuration, the customers can elevate the sample processing volume up to 3ml or 5ml to obtain higher yields of the purified product, and the throughput up to 20 samples.

Modular designs

Process samples up to 1ml



96-Deepwell plate



Magnetic rod's tip

Auto-Pure32A consumable

Process samples up to 3ml



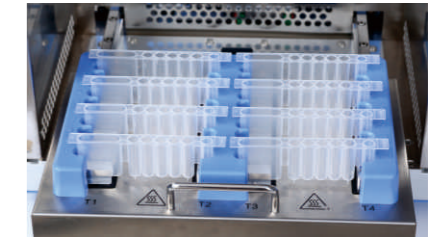
Magnetic rod's tip



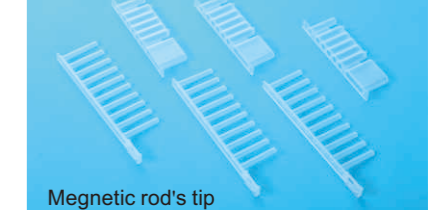
9-tubes strip

Auto-Pure20A consumable

Process samples up to 5ml



7-tubes strip

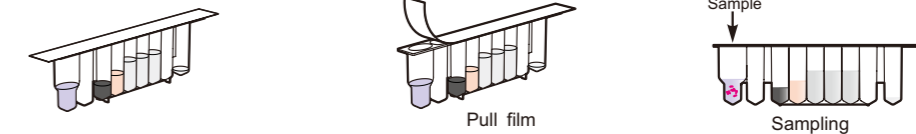


Magnetic rod's tip

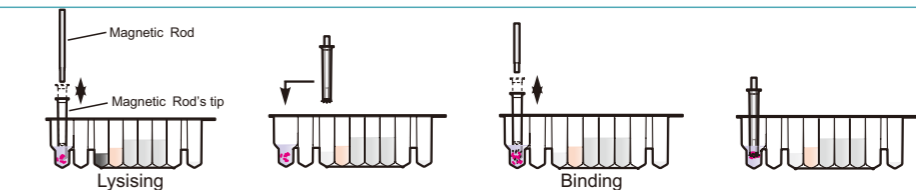
Auto-Pure20B consumable

Magnetic Bead Extraction (Auto-Pure20A)

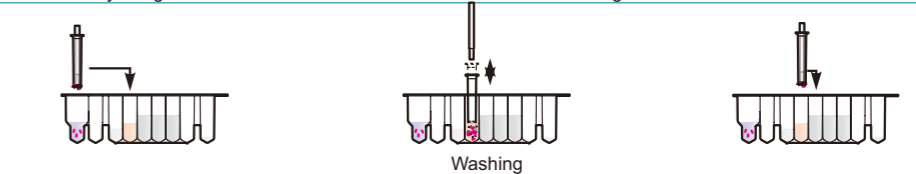
01 Sample



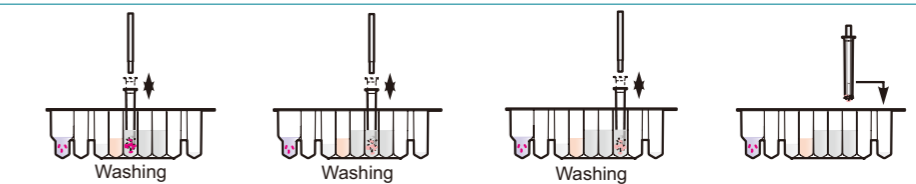
02 Lysing Binding



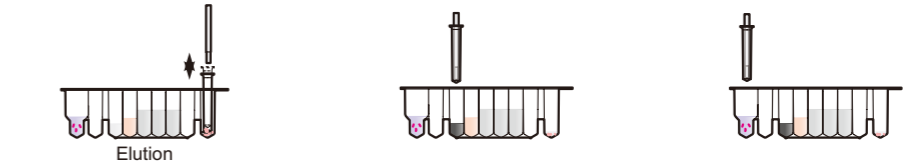
03 Washing



04 Washing



05 Elution



03 Auto-Pure32A/Auto-Pure20A/Auto-Pure20B Nucleic Acid Purification System

01

Special features for Auto-Pure20A

1. Patented design of 9-tubes strip
2. Process samples up to 3ml and Max.sample volume 1.2ml
3. Reducing reagent waste and good for research use



02

Special features for Auto-Pure20B

1. Patented design for 5ml tubes strip
2. Process samples up to 5ml and Max.sample volume 2ml
4. Patented design for line-mixing the sample, it's good for cell free fetal DNA and next-generation sequencing technology and non-invasive prenatal diagnosis

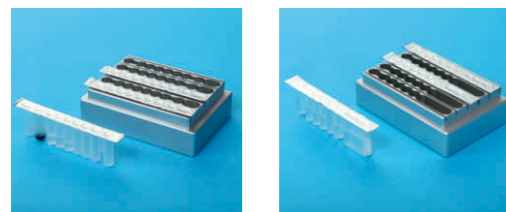


03

Matching product for Auto-Pure series: SealBio-2 SealBio-2 of Adapter for Auto-Pure tube strips



SealBio-2 Plate Sealer



Adapter for Auto-Pure20 series tube strips

04

Matching product for Auto-Pure20 series: FCM-1 FCM-1 Film Cutting Machine



FCM-1

1. Easy to operate; To push the button once and the work station will move back and forth once
2. The motor have a self-locking function, to protect user.
3. Hold an adapter for SealBio-2. After filming and take it onto the machine, then be able to cut the film
4. Push the button one time, the work-station will move one time
5. Specification:
 - 1) Type: FCM-1
 - 2) Power: 10W
 - 3) Cutting time: 2.5s
 - 4) Weight: 1.5kg
 - 5) Dimensions: 346x108x148.5mm

Specification

Type	Auto-Pure32A	Auto-Pure20A	Auto-Pure20B	Auto-Pure96	Auto-Pure24
Throughput	1~32	1~20	1~20	1~96	1~24
Process volume	50~1000ul	50~3000ul	50~5000ul	50~1000ul	50~10000ul
Collection efficiency	>95%	>95%	>95%	>95%	>95%
Magnetic rod number	32	20	20	96	24
Plate types	96 Deepwell plate	3ml tube strip	5ml tube strip	96 Deepwell plate	24x14.6ml plate
Purification accuracy	100 copy sample positive rate>95%				
Stability	CV<5%				
Heating for lysis tube	Ambient temperature~120°C				
Heating for elution tube	Ambient temperature~120°C				
Operation	7 inch color touch screen				
Extraction steps	Lysis, binding, washing and elution				
Storage Capacity	more than 100 programs				
Protocol Management	Create, edit, delete, protocol mode				
Pollution Control	UV light				
Lighting	Yes				
Extension interface	4 standard USB port, built-in SD card				
Exhaust	Fan				
Power Supply	450W	450W	450W	450W	450W
Dimensions	400 × 470 × 450mm	400 × 520 × 450mm	400 × 520 × 450mm	560 × 620 × 500mm	560 × 620 × 500mm
Weight	25Kg	28Kg	28Kg	54Kg	54Kg

Ordering information

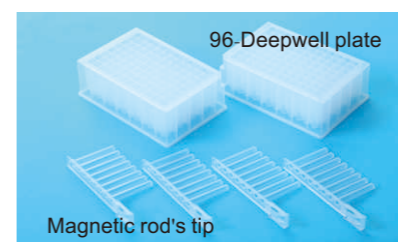
No.	Code	Description	No.	Code	Description
01	AS-17030-00	Auto-Pure32A , AC120V/240V, 50/60Hz	16	AS-17100-00	FCM-1 Film Cutting Machine
02	AS-17040-00	Auto-Pure20A, AC120V/240V, 50/60Hz	17	AS-15020-00	SealBio-2 Plate Sealer
03	AS-17050-00	Auto-Pure20B , AC120V/240V, 50/60Hz	18	AS-15021-03	SBA-3 Weighted sealing platen
04	AS-17060-00	Auto-Pure96, AC120V/240V, 50/60Hz	19	AS-15021-04	Adapter for Auto-Pure20 series tube strips
05	AS-17070-00	Auto-Pure24 , AC120V/240V, 50/60Hz	20	AS-15021-11	Seal-150 Peelable clear Seal
06	AS-17031-01	96-Deepwell plate for Auto-Pure32A	21	AS-15021-12	Seal-200 Peelable Seal for storage
07	AS-17031-02	Magnetic rod's tip for Auto-Pure32A	22	AS-15021-13	Seal-300 Pierce Aluminum heating sealing film
08	AS-17041-01	Tube strips for Auto-Pure20A – 3ml			
09	AS-17041-02	Magnetic rod's tip for Auto-Pure20A/20B			
10	AS-17051-01	Tube strips for Auto-Pure20B – 5ml			
11	AS17061-01	Magnetic tip comb for Auto-Pure96			
12	AS17061-02	96-Deepwell plate for Auto-Pure96			
13	AS17061-03	96-Elution plate for Auto-Pure96			
14	AS17071-01	Magnetic tip comb for Auto-Pure24			
15	AS17071-02	24x14.6ml plate for Auto-Pure24			

04 Auto-Pure10B/10BW/10BS/16A Nucleic Acid Purification System

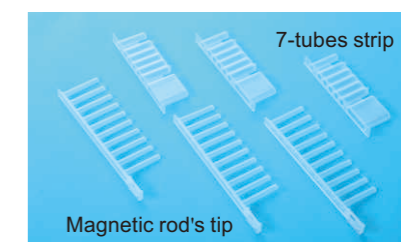


Auto-Pure10B Nucleic Acid Purification System

Modular designs



Auto-Pure16A consumable



Auto-Pure10B/10BW/10BS consumable

Specification

Type	Auto-Pure10B	Auto-Pure10BW	Auto-Pure10BS	Auto-Pure16A
Throughput	1~10	1~10	1~10	1~16
Process volume	50~5000ul	50~5000ul	50~5000ul	50~1000ul
Collection efficiency	>95%	>95%	>95%	>95%
Magnetic rod number	10	10	10	16
Plate types	5ml tube strip	5ml tube strip	5ml tube strip	96 Deepwell plate
Purification accuracy	100 copy sample positive rate>95%			
Stability	CV<5%			
Heating for lysis tube	Ambient temperature~120°C			
Heating for elution tube	Ambient temperature~120°C			
Operation	3.4 inch color touch screen			
Extraction steps	Lysis, binding, washing and elution			
Storage Capacity	more than 100 programs			
Software	APP software and PC software			
Pollution Control	UV light			
Lighting	Yes			
Extension interface	4 standard USB port, built-in SD card			
Exhaust	Fan			
Power Supply	300W	300W	300W	300W
Dimensions	340 × 350 × 410 mm	340 × 350 × 410 mm	340 × 350 × 410 mm	340 × 350 × 410 mm
Weight	18Kg	18Kg	18.5Kg	18Kg

Ordering information

No.	Code	Description	No.	Code	Description
01	AS-17110-00	Auto-Pure10B , AC120V/240V, 50/60Hz	05	AS-17031-01	96-Deepwell plate for Auto-Pure16A
02	AS-17120-00	Auto-Pure10BW, AC120V/240V, 50/60Hz	06	AS-17031-02	Magnetic rod's tip for Auto-Pure16A
03	AS-17130-00	Auto-Pure10BS , AC120V/240V, 50/60Hz	07	AS-17041-02	Magnetic rod's tip for Auto-Pure10B/10BW/10BS
04	AS-17140-00	Auto-Pure16A, AC120V/240V, 50/60Hz	08	AS-17051-01	Tube strips for Auto-Pure10B/10BW/10BS

Product introduction

Auto-Pure10B, Auto-Pure10BW, Auto-Pure10BS and Auto-Pure16A is a miniaturized magnetic bead method nucleic acid extraction and purification instrument, which is developed on the basis of Auto-pure20B and Auto-pure32A. Auto-pure10 series can extract up to 10 samples at the same time, with a maximum sample volume of 5ml. Auto-pure10BS combined with dry bath heating function, small instruments in volume, it is an overwhelming choice for large sample extraction on site; Auto-pure16A can accept 16 samples at most simultaneously, maximum sample volume is 1ml

Product features

Auto-Pure10 series

Auto-Pure10B

1. Purification of 10 samples in one run
2. Processing volume of 50-5000ul with 6.5ml-tube strips for Auto-Pure10B

Auto-Pure10BS (with dry bath)

1. Purification of 10 samples in one run
2. Processing volume of 50-5000ul with 6.5ml-tube strips for Auto-Pure10B

Auto-Pure10BW (without heating for lysis and elution)

1. Purification of 10 samples in one run
2. Processing volume of 50-5000ul with 6.5ml-tube strips for Auto-Pure10B

Auto-Pure16A

1. Purification of 16 samples in one run
2. Processing volume of 10-1000ul with 2.2ml Deep Well 96 plate

Instrument features

1. 3.4 inch touch screen, easy to use.
2. Temperature and protocols can be edited and saved according to different reagent requirements.
3. Short operation time: 15~40min per run
4. High yield of nucleic acid with low magnetic bead loss and good repeatability of results.
5. UV disinfection, avoid cross contamination.
6. Open system which can apply to different magnetic bead extraction reagent.
7. APP software (Android system) which can monitor the system in real time through mobile device.
8. Using the PC software, user operate easily the machine.
9. Screw rod design which guarantee high operating accuracy; large guide rail design makes the structure more reliable.
10. With QR code identification function, special reagent can be recognized, no need to program or obtain protocols.
11. Small volume, suitable for extraction on site.

05 SealBio-2 Semi Automated Plate Sealer

Description

SealBio-2 Plate Sealer is a semi-automatic thermal sealer which is ideal for the low to medium throughput laboratory that requires uniform and consistent sealing of micro-plates. Unlike manual plate sealer, the SealBio-2 produces repeatable plate seals. With variable temperature and time settings, sealing conditions are easily optimised to guarantee consistent result, eliminating sample loss. The SealBio-2 can be applied in product quality control of many manufacture enterprises such as plastic film, food, medical, inspection institute, scholastic scientific research and teaching experiment. Offering complete versatility, the SealBio-2 will accept a full range of plates for PCR, assay or storage applications.

Features

■ Highlights

1. Format different micro well plates and heat seals
2. Adjustable Sealing Temperature: 80 - 200°C
3. OLED screen, high light and no visual angle limit
4. Plate adapters allow use of PCR plate or virtually any ANSI microplate

■ Energy Saving Functions

1. When the SealBio-2 is left idle more than 60min, it will automatically switch into stand-by mode during when the temperature of the heating element is reduced to 60°C to save energy
2. When the SealBio-2 is left idle more than 120min, it will switch off automatically for safe. It will switch off the display and the heating element. then, the user can awaken the machine by pushing any button

■ Controls

Sealing time and temperature can be set by using the control knob, OLED display screen, high light and no visual angle limit.

1. Sealing time and temperature
2. Sealing pressure can be adjustable
3. Automatic counting function

■ Security

1. If a hand or objects stuck in the drawer when it's moving, the drawer motor will automatically reverse. This feature prevents injury to the user and the unit
2. Special and smart design on the drawer, it can be detached from the main device. So user can maintain or clean the heating element easily

Easy to use



Step.1 Pull the drawer Step.2 Put the adapter plate Step.3-1 Put a sealing film Step.3-2 Put the weighted seal platen if the film is curly Step.4 Press "RUN"

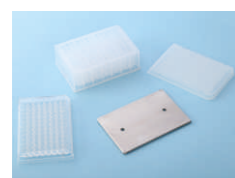
Remark: When using the weighted seal platen, the recommended sealing time should be increased by 1 second!

Specification

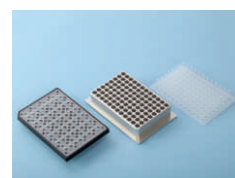
Display	OLED
Sealing temperature	80~200°C (increment 1.0°C)
Temperature accuracy	±1.0°C
Temperature uniformity	±1.0°C
Sealing time	0.5~10s (increment 0.1s)
Seal plate heights	9 to 48mm
Input Power	300W
Dimension (D x W x H)mm	370 × 178 × 330
Weight	9.6kg
Compatible Plate Materials	PP (Polypropylene), PS (Polystyrene), PE (Polyethylene)
Compatible plate types	SBS Standard plates, Deep-well plates, PCR plates (Skirted, semi-skirted and no-skirted formats)
Heating Sealing Films & Foils	Foil-polypropylene laminate, Clear polyester-polypropylene laminate, Clear polymer, Thin clear polymer

Ordering information

No.	Code	Description
01	AS-15020-00	SealBio-2 AC220V or AC120V, 50/60Hz, 300W
02	AS-15021-01	SBA-1 Standard plate adapter
03	AS-15021-02	SBA-2 96-well PCR plate adapter
04	AS-15021-03	SBA-3 Weighted sealing platen
05	AS-15021-11	Seal-150 Peelable clear Seal
06	AS-15021-12	Seal-200 Peelable Seal for storage
07	AS-15021-13	Seal-300 Pierce Aluminum heating sealing film



01
SBA-1
Standard plate adapter



02
SBA-2
96-well PCR plate adapter



03
SBA-3
Weighted seal platen



II Molecular Biology Instruments

01 Nano-100 / Nano-300 / Nano-400A / Nano-500 Micro-Spectrophotometer



Nano-100



Nano-400A



Nano-300



Nano-500

Description

1. User-friendly software, easy to use

It is easy to use, free software updates are available

2. Micro-volumes measuring

Only require 0.5~2 μ l sample to accurately determine nucleic acids, proteins

3. Fast and easy measurements

Turn on and instantly measure without lamp warm up time; Easy measurement within 8 sec

4. Long life's Xenon flash lamp

Xenon flash lamp, 10 flashes, up to 10 years, no dilutions and expensive consumables

5. No consumables required

Direct microvolume measurements from 1~2 μ L of sample. Eliminates the need for expensive accessories

6. No computer required and with touch screen (Nano-300, Nano-400A, Nano-500)

Nano-300, Nano-400A, Nano-500 is equipped with Android system operation

7. The Nano-100 / Nano-300 / Nano-500 are full range of wavelength (200-800nm) detection ability; The Nano-400A is a basic UV spectrophotometer specifically designed (only two types of wavelength 260nm and 280nm) for nucleic acids and proteins

8. Nano-500 also can be used to test the Fluorescence

For samples with concentrations below 2 ng/ μ l, fluorometric mode can be used, and the minimum detection limit can reach 0.5pg/ μ l

01 Nano-100/Nano-300/Nano-400A/Nano-500 Micro-Spectrophotometer

01

NANO-100 Highlights

1. Turn on and instantly measure without lamp warm up time; Full scan capability from 200-800nm within 5 sec
2. Detects Nucleic Acids up to 4500ng/ul (dsDNA)
3. 3864-Element linear silicon CCD array
4. Need to connect computer
5. Software compatibility: WinXP, Win7, Win8

02

NANO-300 Highlights

1. Nano-300 is an improved Micro-Spectrophotometer based on Nano-100 with 200-800nm. It is added a function of bacterium cell concentration detection (OD600)
2. Android system, 7 inch touch screen, APP software, simple interface, easy to use
3. Equipped with HD touch screen, no need to connect PC
4. 2048-Element linear silicon CCD array detector
5. Turn on and instantly measure without lamp warm up time; Full scan capability from 200-800nm within 6 sec
6. To detect the concentration of bacteria and microorganism are more convenient with the OD600 function
7. The data can be printed with built-in printer, and can output via USB for data analysis and storage
8. When the Nano-300 is idly left more than 5mins, it will switch off automatically. Then, the user can awake the machine by touching the screen



OD600 detection

03

NANO-400A Highlights

1. Nano-400A is a basic micro-volume UV spectrophotometer designed (only 3 types of wavelength: 260nm, 280nm and 365nm) for the measurement of nucleic acids and proteins
2. Android system operation, 7 inch touch screen no computer, APP software, simple interface, easy to use
3. To detect the concentration of bacteria and microorganism are more convenient with the OD600 function
4. Measures nucleic acid concentration at 260nm and purity using the ratio 260/280
5. Measure purified protein concentration at 280nm
6. The data can be printed with built-in printer, the data can output via SD-RAM Card and USB memory

04

NANO-500 Highlights

1. Nano-500 is designed base on nano-300:
 - A. To added the 0.05mm optical path length, and the highest detection concentration up to 15000ng/ul
 - B. To added the Fluorescence detection function, which can be used for accurate quantification of extremely low concentration nucleic acid with a lower limit of 0.5pg/ul
 - C. Automatic detect after put down the arm
2. The patented lifting motor structure makes the liquid column stretch more gentle, preventing the liquid column from breaking due to structural problems. In addition, the structure can effectively solve the instability of reading caused by high concentration sample, especially suitable for precise quantification of protein samples
3. Android system, 7-inch capacitive touch screen, intuitive APP software, simple and easy to use
4. To detect the concentration of bacteria and microorganism are more convenient with the OD600 function
5. With a 2048-Element linear CCD array detector, the detection and display can be completed in 6s
6. Equipped with HD touch screen, no need to connect computer.
7. Longer service life of optical component, intelligent identification of user usage. The light source will auto off after 5 minutes without any operation to extend service life
8. The result can be printed by a built-in printer or exported via USB for data analysis and storage

05

New fluorescence detection function for nano-500

Fluorescence detection combined with fluorescence quantitative analysis kit, able to accurately quantify DNA, RNA and protein concentration through the specific binding of fluorochrome with target material, and the minimum limit is 0.5pg/u(dsDNA). Nano-500 can be compatible with common fluorescence quantitative reagent to provide users with maximum convenience and minimum detection cost.



Fluorescence mode

Code	Light	Excitation Filters	Emission Filters
Nano-500U (optional)	UV	365±20nm	420-480nm (60nm)
Nano-500 (standard)	Blue	460±20nm	525-570nm (45nm)
Nano-500G (optional)	Green	525±20nm	575-640nm (65nm)
Nano-500R (optional)	Red	625±20nm	670-725nm (55nm)

Specification

Light source	LED
Dynamic range	Five orders of magnitude
Linear Dynamic Range	R ² >0.995
Detector	Photodiode
Repeatability	<1.5%
Stability	<1.5%
Sensitivity	dsDNA: 0.5ng/ml
Measurement speed	3s (Once)

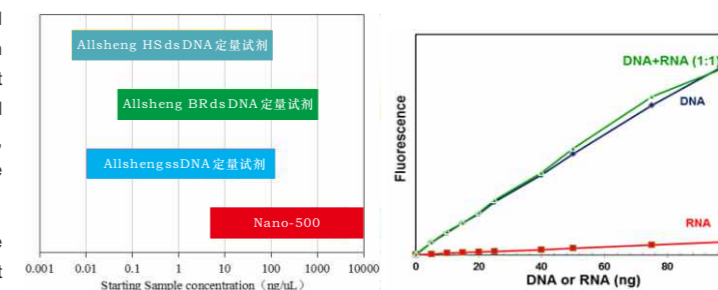
Application of different fluorescence channel

Channel	Excitation Filters	Normal kits	Applications
UV channel	365±20nm	Hoechst 33258, 4-MU, EnZCheK Caspase	Nuclear acid quantification, Plant GUS reporter gene detection, Poptosis detection
Blue channel	460±20nm	PicoGreen®, oligreen, RiboGreen®, GFP, Protein, Fluorescein, Quant-iT™	dsDNA, ssDNA, RNA quantification, GFP gene detection, Fluorescein detection, Protein detection
Green channel	525±20nm	Rhodamine, Cy3, RFP Vybrant Cytotoxicity	Rhodamine detection, Cy-3 fluorescence labeling detection, RFP gene detection, Cell activity position detection
Red channel	625±20nm	Cy5, Quant-iT RNA	Cy-5 fluorescence labeling detection, RNA quantification

Fluorescence detection features

Fluorescence detection is able to precise quantification the concentration of DNA, RNA, protein with the high sensitive fluorescence analysis kits. The related fluorochrome could be emission the optical wave which waveband is larger than absorbing light, only when combined with the target molecule in the sample, after absorbed a certain optical wave, to quantify the intensity of this fluorescent. Then, confirm the target material contents according to the standard curve

Compare to the Nano-300, added function of fluorescence detection is available to increase the lower limit (see the left draw) of sample detection. In addition, even there is the RNA existing in the sample when doing the DNA detection, the fluorescence still with the strong specificity (see the right draw)



06

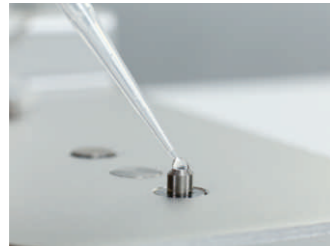
Nano-300 and Nano-500 Capabilities

- Wide spectral range (200-800nm) for measuring a variety of samples types:
 - DNA and RNA (260nm)
 - Purified protein (280nm)
 - Industrial dyes (490nm)
 - Gold nanoparticles (520nm)
 - Colorimetric protein assays (BCA 562nm, Bradford 595nm, Modified Lowry 650nm)
 - Optical Density measurements (OD600)
- 2048-Element linear silicon CCD array
- To calculate sample purity ratios: A260/A280, A260/A230
- User-friendly software includes custom methods and data export capabilities

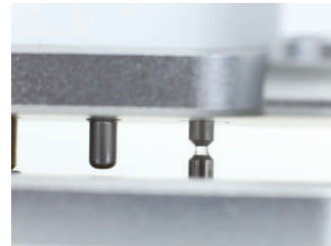


07

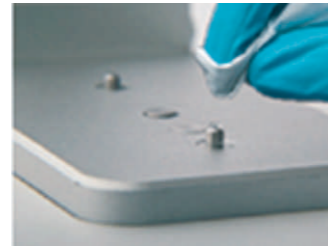
Easy Handling:



■ Adding sample

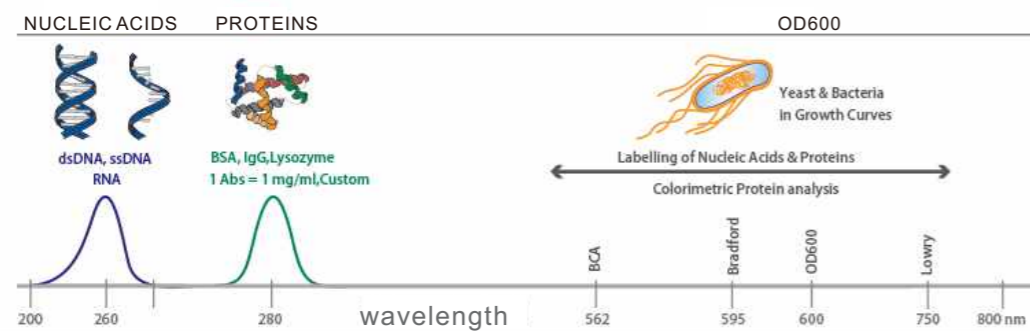


■ Measuring sample



■ quick and easy cleaning

Applications



Ordering information

No.	Description
AS-11060-00	Nano-500 Micro-Spectrophotometer, DC24V 5W (Standard)
AS-11070-00	Nano-500U Micro-Spectrophotometer, DC24V 5W (Optional)
AS-11080-00	Nano-500G Micro-Spectrophotometer, DC24V 5W (Optional)
AS-11090-00	Nano-500R Micro-Spectrophotometer, DC24V 5W (Optional)

Specification

Type	Nano-100	Nano-300	Nano-400A	Nano-500
Wavelength Range	200-800nm	200-800nm	260nm, 280nm	200-800nm
Minimum Sample Size	0.5-2.0µl	0.5-2.0µl	1-2.0µl	0.5-2.0µl
Path Length	0.2mm 1.0mm	0.2mm 1.0mm	0.5mm	0.05mm 0.2mm 1.0mm
Light Source	Xenon flash lamp	Xenon flash lamp	UV LED	Xenon flash lamp
Detector Type	3864-Linear CCD array	2048-Linear CCD array	UV-sillion photocell	2048-Linear CCD array
Wavelength Accuracy	1nm	1nm	—	1nm
Spectral Resolution	≤3nm (FWHM at Hg546nm)	≤3nm (FWHM at Hg546nm)	—	≤3nm (FWHM at Hg546nm)
Absorbance Precision	0.003Abs	0.003Abs	0.005Abs	0.003Abs
Absorbance Accuracy	1% (7.332Abs at 260nm)	1% (7.332Abs at 260nm)	1% (7.332Abs at 260nm)	1% (7.332Abs at 260nm)
Absorbance Range	0.02 - 90A	0.02 - 100A	0.02 - 80A	0.02 - 100A
Detects Nucleic Acid up to	2-4500ng/ul (dsDNA)	2-5000ng/ul (dsDNA)	10-4000ng/ul (dsDNA)	2-15000ng/ul (dsDNA)
Measurement Time	<8S	<5S	<8S	<6S
Data Output	Connect PC	USB	USB	USB
Sample Pedestal Materia	Aluminum alloy and Quartz fiber			
Operating Voltage	24V DC	24V DC	24V DC	24V DC
Operating Power	20W	25W	25W	25W
Standby Power	5W	5W	5W	5W
Dimension (W x D x H)mm	200 x 250 x 166	210 x 268 x 181	210 x 280 x 181	210 x 310 x 181
Weight	2.6kg	2.8kg	3.5kg	2.8kg
Software Compatibility	WinXP, Win7, Win8	Android System	Android System	Android System
Fluorescent detection				
Sensitivity	—	—	dsDNA: 0.5pg/ul	—
Linear Dynamic Range	—	—	R ² > 0.995	—
Repeatability	—	—	< 1.5%	—
OD600nm Measurement				
Light Source	—	LED	LED	LED
Wavelength Range	—	600±8nm	600±8nm	600±8nm
Absorbance Range	—	0-4A	0-4A	0-4A

Ordering information

No.	Code	Description
01	AS-11010-00	Nano-100 Micro-Spectrophotometer, DC24V 5W
02	AS-11020-00	Nano-300 Micro-Spectrophotometer, DC24V 5W
03	AS-11050-00	Nano-400A Micro-Spectrophotometer, DC24V 5W
04	AS-11021-01	Cuvette for Nano-300, Nano-400A and Nano-500

02 Fluo-100 Fluorometer



01

Fluorometer technical background

Our nano series Micro-Spectrophotometer measure the concentration and purity of the sample, because it is able to measure the absorbance of the whole ingredient (such as DNA, RNA, oligos and so on) of the sample at 260nm, that may make the read inaccurate. While the fluorometer measure the fluorescence intensity of the fluorescent reagent which combine with the target molecule to read the concentration of sample. Generally, the read is lower than Nano series products but much accuracy than it

The sensitivity of Nano series products are above 5ng/ul, and while the fluorometer is 0.5pg/ul in measuring DNA concentration. It is important and necessary for the most applications to read the lower and accuracy concentration of the sample. Using the Fluo-100 fluorometer with the quantitation kit can measure the sample concentration rapidly, sensitively and accurately



02

Fluo-100 Simple, easy to use and applications

The Fluo-100 is a dual-channel fluorometer, it provides high-sensitive fluorescent detection when quantifying nucleic acids and proteins, simple and cost to operate Applications:

1. The sample is scarce and difficult in processing
2. The low quantity of DNA, RNA, or protein after extraction
3. The sample will be used in the expensive experiments: qPCR, PCR cloning, transfection, the next generation sequencing and etc.

03

Fluo-100 Highlights

1. Simple – 4.3 inch touch screen, small and easy to use
2. Easy measurement within 3 sec for DNA, RNA, and protein
3. High sensitivity – Lowest DNA detection limit is 0.5pg/ul
4. Two optical channels – Equipped with two fluorescence channels for nucleic acid, protein quantitation in one detection
5. Linear Dynamic Range--Five orders of magnitude.
6. Opening system--You can match the instrument with the reagent you choose
7. It can save at most 1,000 data and output data by USB port
8. Adapter: 0.5ml qPCR tube adapter
0.2ml qPCR tube adapter

04

Two detection models of Fluo-100

Code	Light	Excitation Filters	Emission Filters
Fluo-100A	UV	365±20nm	420-480nm (60nm)
	Blue	460±20nm	525-570nm (45nm)
Fluo-100B	Blue	460±20nm	525-570nm (45nm)
	Red	625±20nm	670-725nm (55nm)
Fluo-100C	Blue	460±20nm	525-570nm (45nm)
	Green	525±20nm	575-640nm (65nm)

05

Fluo-100 Quantitation kit

High sensitivity of dsDNA Quantitation Kit: 0.2--100ng

High sensitivity of ssDNA Quantitation Kit: 1--200ng

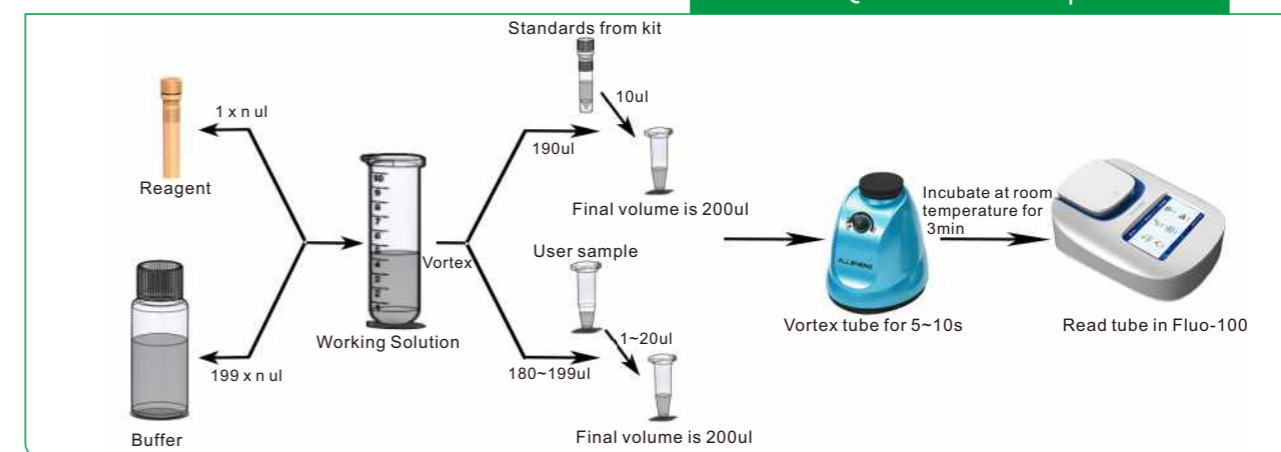
Broad range of dsDNA Quantitation Kit: 100--1600ng

Protein Quantitation Kit is researching

Specification

Light source	LED
Dynamic range	Five orders of magnitude
Linear Dynamic Range	R ² >0.995
Detector	Photodiode
Repeatability	<1.5%
Stability	<1.5%
Sensitivity	dsDNA: 0.5ng/ml
Measurement speed	3s (Once)
Dimension (W×D×H)mm	194 × 155 × 72.5 mm
Weight (kg)	0.4Kg

Fluo-100 Quantitation kit operation



Application of different fluorescence channel

Channel	Excitation Filters	Normal kits	Applications
UV channel	365±20nm	Hoechst 33258, 4-MU, EnZCheK Caspase	Nucleic acid quantification, Plant GUS reporter gene detection, Poptosis detection
Blue channel	460±20nm	PicoGreen®, oligreen, RiboGreen®, GFP, Protein, Fluorescein, Quant-iT™	dsDNA, ssDNA, RNA quantification, GFP gene detection, Fluorescein detection, Protein detection
Green channel	525±20nm	Rhodamine, Cy3, RFP Vybrant Cytotoxicity	Rhodamine detection, Cy-3 fluorescence labeling detection, RFP gene detection, Cell activity position detection
Red channel	625±20nm	Cy5, Quant-iT RNA	Cy-5 fluorescence labeling detection, RNA quantification

Ordering information

Code	Description	Code	Description
AS-18010-00	Fluo-100A Fluorometer, DC12V 1A	RS-FL0101-S	High-sensitivity dsDNA Quantitation kits (100 assays)
AS-18020-00	Fluo-100B Fluorometer, DC12V 1A	RS-FL0101-M	High-sensitivity dsDNA Quantitation kits (200 assays)
		RS-FL0101-L	High-sensitivity dsDNA Quantitation kits (1000 assays)
AS-18030-00	Fluo-100C Fluorometer, DC12V 1A	RS-FL0102-S	Broad-range dsDNA Quantitation kits (100 assays)
AS-18011-01	Adapter for 0.5ml qPCR tube (Standard)	RS-FL0102-M	Broad-range dsDNA Quantitation kits (200 assays)
		RS-FL0102-L	Broad-range dsDNA Quantitation kits (1000 assays)
AS-18011-02	Adapter for 0.2ml qPCR tube (Optional)	RS-FL0103-S	High-sensitivity ssDNA Quantitation kits (100 assays)
		RS-FL0103-M	High-sensitivity ssDNA Quantitation kits (200 assays)
		RS-FL0103-L	High-sensitivity ssDNA Quantitation kits (1000 assays)

03 Gene-8C / Gene-8C2 Isothermal Fluorescence PCR



01

Gene-8C/Gene-8C2

Gene-8C / Gene-8C2 is an Isothermal fluorescence PCR instrument, it is a compact, lightweight, low cost, stand alone, sensitive instrument suitable for field based and point of care diagnostic applications.

The Gene-8C is a portable instruments that provides measurement of one fluorophore, and the Gene-8C2 provide measurement of two fluorophores.

We designed these to run any isothermal amplification method that employs target detection by fluorescence measurement. The Gene-8C/Gene-8C2 boast low power requirements and includes a rechargeable Lithium-polymer battery that can keep it running for 2-5 hours

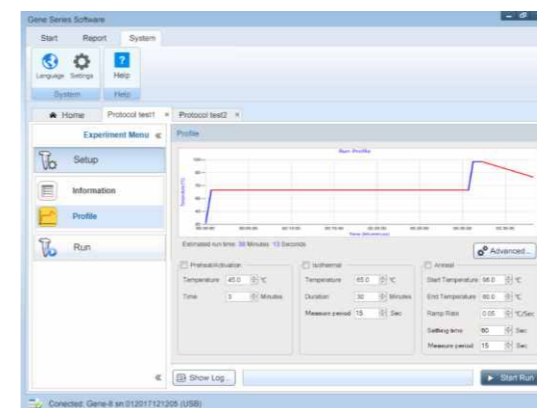
Gene-8C / Gene-8C2 have a 7inch touch screen. Real-time temperature and fluorescence data are displayed graphically and in real-time during a run and all of the data are held in the instrument's large internal Flash memory. These data are permanently stored and can be reviewed at any time after the run has finished or uploaded to a PC or an android mobile via USB link or WIFI

01

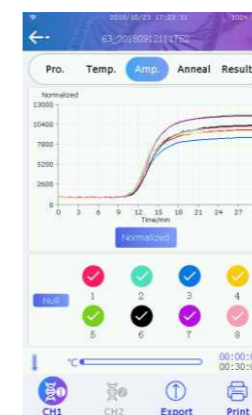
Features

1. Small footprint, low-cost and easy to use, suitable for bench top and field applications
2. Purpose-designed sophisticated instruments that support any isothermal DNA/RNA amplification method employing fluorescence readout
3. 7 inch touchscreen, and offers stand-alone operation, it no need for a host computer
4. Support eight standard 0.2ml tubes
5. One channel or two channel fluorescence detection per tube
6. Easy to use advanced desktop software and APP software (Android mobile) for the test configuration management and export
7. Testing temperature range: RT. to 99°C
8. PC software, APP software and built-in software for powerful and validated data analysis and review
9. Easy access to data via USB interface and WIFI
10. Use independently via touch screen, link to computer via a USB cable or link to android mobile via WIFI
11. To link printer via USB cable and print the text data and results which you require
12. Mains or battery-powered

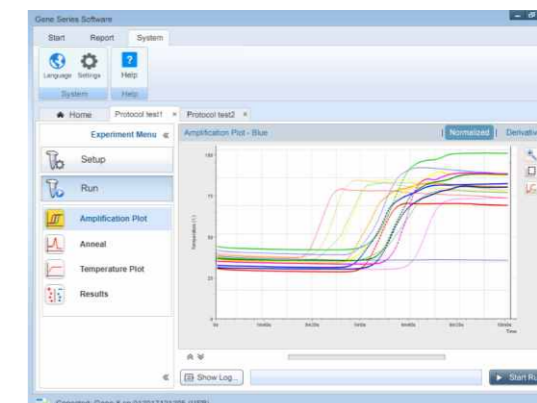
Software



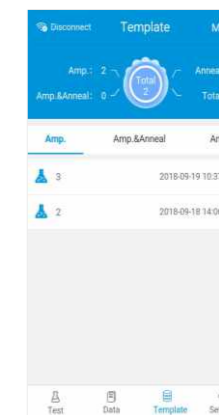
Built-in software



PC software interface



Android mobile's APP software



03

Allow molecular detection to be portable, sensitive, fast

1. The software are simple to use
2. Fully automated interpretation of results
3. PC and APP software also included
4. Suitable for use with any isothermal amplification protocol
5. Observe real-time data from isothermal amplification reactions
6. Monitor all dyes with excitation at 470nm and detection above 520nm
7. Application: LAMP, CPA, RPA, RAA, RCA, SDA etc. Isothermal amplification

Ordering information

Code	Description
AS-20010-00	Gene-8C Isothermal Fluorescence PCR
AS-20020-00	Gene-8C2 Isothermal Fluorescence PCR
AS-20011-01	Charger for Gene-8C/8C2

Specification

Type	Gene-8C	Gene-8C2
Sample Number	8 wells (1x8 strip)	8 wells (1x8 strip)
Sample Volume	15ul-150ul	15ul-150ul
Touchscreen	7 inch	7 inch
Temperature control range	ambient - 99	ambient - 99
Temperature accuracy	±0.1	±0.1
Temperature uniformity	±0.15	±0.15
Heating speed	2 /s	2 /s
Cooling speed	2 /s	2 /s
Channels	one	two
Optics source	F1: 470nm	F1: 470nm F2: 590nm
Detection	F1: 525nm	F1: 525nm F2:630nm
Power Adapter	DC15V 8A	DC15V 8A
Dimensions (WxDxH) mm	145x305x100mm	145x305x100mm
Weight	1.9kg	1.9kg

04 AMR-100 Microplate Reader



Description

AMR-100 Microplate Reader is a reliable and robust instrument for a wide variety of research and clinical applications. It reads various kinds of 96-wells plates and equipped with shaking function. It can be used as a stand alone instrument or under PC control with regular or APP software. The software is easy-to-use..

AMR-100 Microplate Reader is a 9-channel absorbance microplate reader that provides not only accurate, reproducible and fast measurements, but also offer innovative design with its easy-to-use control and data analysis software. It is ideal for a variety of ELISA applications in the biology laboratory

1. Easy of use with 7 inch touch screen together with 3 external keys
2. A broad wavelength range of 340-750nm
3. Able to use individually or connect with PC and export results
4. Absorbance range: 0.0~4.000Abs
5. 8 positions optical filter wheel, equipped with 4 standard optical filters
6. Rapid and accurate measurement of 96-well plates within 6 seconds
7. 9-channel ELISA reader for fast measurements
8. Additional reference channel for optimized light intensity
9. Endpoint, kinetic and multi-label measurements for a variety of applications
10. Shaking with variable time and speed
11. PC software, APP software and built-in software for powerful and validated data analysis

Specification

Display	7 inch touch screen (800x480 dots)
Light source	Quartz-halogen lamp 6V/10W
Wavelength	340-750nm
Optical filter	Equipped with filters: 405,450,492,630nm
Half-bandwidth of filters	8~10nm
Read-out range	0~4.000Abs
Linearity (405nm)	(0~2.000Abs) $\leq \pm 1\%$, [2~4.000Abs] $\leq \pm 2\%$
Resolution	0.001Abs
Accuracy (405nm)	$\pm 1\%$ (0-3Abs); $\pm 3\%$ [3-4Abs)
Precision(405nm)	CV $\leq 0.2\%$ (0-3Abs); CV $\leq 1\%$ [3-4Abs)
Test speed	<6s for 96 wells plate
Incubator	No
Shaking	3 modes shaking: slow, medium and fast
User interface	Integrated software or PC control software
Operation	Touch screen, 3 pcs external keys
Storage	200 programs and 100,000 test records
Ports	3 USB ports, for PC, printer and USB-disk
Power supply	AC100-240V, 50-60Hz, 2A
Dimensions (W x D x H)	440 x 295 x 225 mm
Weight (kg)	10Kg

Ordering information

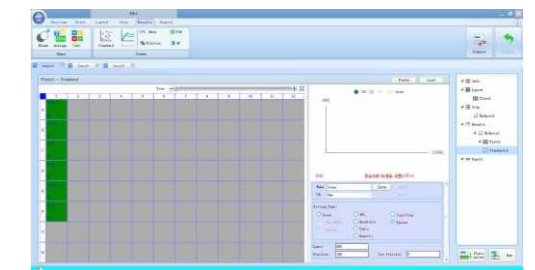
No.	Code	Description	No.	Code	Description
01	AS-16050-00	AMR-100 Microplate Reader	18	AS-16051-17	Optical filter 510nm
02	AS-16051-01	Optical filter 340nm	19	AS-16051-18	Optical filter 520nm
03	AS-16051-02	Optical filter 380nm	20	AS-16051-19	Optical filter 532nm
04	AS-16051-03	Optical filter 405m (Standard)	21	AS-16051-20	Optical filter 546nm
05	AS-16051-04	Optical filter 415nm	22	AS-16051-21	Optical filter 560nm
06	AS-16051-05	Optical filter 450nm (Standard)	23	AS-16051-22	Optical filter 562nm
07	AS-16051-06	Optical filter 492nm (Standard)	24	AS-16051-23	Optical filter 600nm
08	AS-16051-07	Optical filter 540nm	25	AS-16051-24	Optical filter 620nm
09	AS-16051-08	Optical filter 570nm	26	AS-16051-25	Optical filter 646nm
10	AS-16051-09	Optical filter 578nm	27	AS-16051-26	Optical filter 663nm
11	AS-16051-10	Optical filter 590m	28	AS-16051-27	Optical filter 700nm
12	AS-16051-11	Optical filter 595nm	29	AS-16051-28	Optical filter 750nm
13	AS-16051-12	Optical filter 630nm (Standard)	30	AS-16051-50	Replacement Lamp
14	AS-16051-13	Optical filter 650nm	31	AS-16051-51	Printer
15	AS-16051-14	Optical filter 690nm	32	AS-16051-52	Printer Paper
16	AS-16051-15	Optical filter 470nm	33	AS-16051-53	Calibration Plate
17	AS-16051-16	Optical filter 490nm			

01 AMR-100 Highlights

1. Easily use with 7 inch touch screen together with 3 external keys
2. It keeps with high visual and logical user interface of software, it can be offered a comprehensive inbuilt calculations, such as blank subtraction, quantitative curve fit, quantitative classification and kinetic calculations, as well as the versatile reporting tool and make data reduction



AMR-100 Operation



ReaderIt-I

05 FlexA-200 Microplate Reader



Description

FlexA-200 is a UV/Vis micro-plate spectrophotometer offering free wavelength selection, so being an ideal tool for virtually any photometric research application, such as DNA, RNA, protein analysis and more. It offers exceptional usability through its intuitive, user-friendly internal software and comprehensive ReaderIt-II Software.

FlexA-200 microplate reader has been designed to deliver high performance and high quality results with minimal user effort. It measures 96- and 384-well plates and plate shaking motion is linear.

Features

1. 10 inch touch screen, and offers stand-alone operation, it is easy to use

Intuitive, user-friendly internal software on a 10 inch touch screen for quick measurements. Easy and logical assays setup for demanding assays with the powerful PC software (ReaderIt-II), the PC software can offer to analysis, review, validate data. It is easy access to data via USB interface and WIFI.

2. Freely selectable wavelengths from 200 - 1000 nm for the demands of various assays

Wavelength selection in FlexA-200 is done by using an advanced monochromator system. Any wavelength between 200 to 1000nm can be selected at any time. Using the spectral scanning feature, the whole spectrum of a sample be scanned in 1nm increments to allow identification of the optimal measurement wavelength for a new assay.

3. Both microplate reading for any throughput requirements

It measures 96- and 384-well plates.

4. Flexibility and performance for various photometric applications

FlexA-200 microplate reader supports endpoint, kinetic and spectral scanning assays. It reads 96- and 384-well microplates with and without lids.

A broad wavelength range with the UV area, pathlength correction as well as fast spectral scanning makes it an ideal tool for any photometric research application, including DNA, RNA and protein analysis.

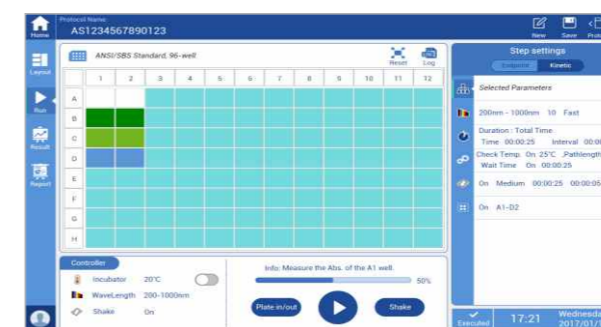
01

Choose detection wavelength freely with raster

FlexA-200 adopt the xenon flash lamp as light source, which choose the wavelength range from 200-1000nm with 1nm step by grating monochromator for the full spectrum scanning only needs 15 seconds each sample.

02

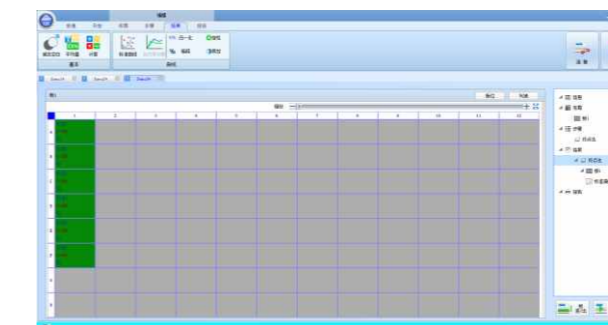
Friendly operation interface which can complete fast detection in FlexA-200



The built-in software of FlexA-200 which has 10 inch high resolution touch screen and adopts the graphic interface, it makes the operations easy. In addition, you can use USB to export data.

04

ReaderIt-II software has the strong data analysis and advanced detection setting ability



Graphic interface ReaderIt-II realized the simulation demonstration function. The data analysis function includes quantitative curve fitting, quantitative analysis, kinetics calculation, custom equation and 4 parameter fitting and so on. Data can be exported to Excel format easily, and the detailed report also can be exported by the built-in tools.

04

Liner shaking function for microplate

- Three options for the shaking speed: Low speed, Intermediate speed and High speed.
 - Low speed: 5Hz, amplitude 15mm
 - Intermediate speed: 11Hz, amplitude 3mm
 - High speed: 20Hz, amplitude 1mm
- Shaking mode can be run in the kinetic progress.

05

Incubator function

Temperature range: ambient +5°C to 45°C

Heating up time: heating up time from 25°C to 37°C is less than 45min (96 well plate without cover, 200ul water per well)

Uniformity: < 1.0°C (96 well plate without cover, at 37°C)

Average temperature difference: ±0.5°C (at 37°C)

06

High quality data and stabilized performance

The optical system makes sure the high quality data and stabilized performance of FlexA-200.

- Double beam optical system has the reference optical channel system, which make the data more stabilization.
- Self checking system make sure the device running stabilized.
- Long life xenon lamp which can be used for 10⁹ times.

07

Wide and convenient application

FlexA-200 can be used for spectrum scanning, end point and kinetic detection in 96/384-well plates.

Applications:

- DNA/RNA quantitative and purity analysis
- Protein quantitative
- Enzymology and immune detection
- Kinetic detection
- Cell multiplication and cytotoxicity detection
- Cell apoptosis detection
- Report gene and GPCR detection

Easy to use:

- Raster full wavelength which can be used for spectrum scanning to find the best detection wavelength.
- Touch screen and built-in graphic interface software with android system make the operation easy.
- Friendly used of ReaderIt- PC software.
- Fast reading mode only need time 10s for 96 well plate and 30s for 384 well plate.
- Software upgrade for free.

08

Energy saving mode

- Stepper motor and incubator shut down.
- Display turns darken.
- Click any button to quit the energy saving mode.

Specification	
Display	10 inch touch screen
Light source	Quartz-halogen lamp
Wavelength range	200 - 1000 nm with 1 nm steps
Wavelength Accuracy	±2 nm
Repetition	±0.2 nm
Wavelength selection	Monochromator
Read-out range	0 - 4.0 OD
Half-bandwidth of filters	<2.5 nm
Detector	two silicon photoelectric detector, one for measurement, another for reference
Linearity @450nm	0 - 2.5 Abs, ±2% (96 well plates)
Accuracy @450nm	1.0% + 0.005 Abs (0 - 2.0 Abs); 2.0% [2.0 - 2.5 Abs)
Precision @450nm	CV < 0.5% accurate model; CV < 1.0% fast mode
Test speed	10 seconds with 96-well plate (fast mode); 30 seconds with 96-well plate (accurate model)
Plate shaking	Linear; three options for speed
Test speed	15 seconds with 96-well plate (single wavelength); 30 seconds with 96-well plate (double wavelength)
Incubator	From ambient + 5°C to 45°C
UI	Integrated software or PC control software
Analysis software	ReaderIt-II
User interface	Touch screen, android system, 10 inch touch screen, external keyboard mouse
Storage	16G memory, more than 10,000 test records can be stored
Ports	3 USB ports, for PC, printer and USB-disk
Automated systems	Temporarily unable compatible with automated systems
Power supply	DC24V 6.5A
Dimensions(W×D×H)	300×500×290mm
Weight	15kg

Ordering information		
NO.	Code	Description
01	AS-19010-00	FlexA-200 Microplate Reader
02	AS-19011-01	ReaderIt-II Software
03	AS-16051-26	Printer
04	AS-16051-27	Printer Paper

06 APW-200 Microplate Washer



Features

1. Low residual liquid, each well ≤1μL
2. Compatible for microplates: flat, U, V, C bottom
3. 4.3 inch color LCD display, easy to operate
4. Washing head position can accurate to 0.1mm
5. Wash parameters can be set to make sure the best washing effect
6. Support external U-disk, for program exporting
7. 100 programs can be saved
8. Uniform volume mark make it easy to measure the liquid
9. Automatic alarm for full liquid
10. Strainer in the pipeline and automatic washing functions avoid the liquid blocking the pipeline

01

Easy Operation

The APW-200 Microplate Washer has 4.3 inch LCD display with friendly interface, U-disk can be used to transfer the datas between the PC and the washer or between two washers, it can also be used to upgrade the software. The washing head can be replaced easily for different kinds of microplates.

02

Safety and reliable feature

The APW-200 Microplate Washer is equipped with liquid position sensor to avoid the washing liquid used up or waste liquid from overflow, minimize the risk and avoid the liquid being sucked into the pump to break the equipment. Besides it has shaking function, which can improve the washing efficiency

Specification

Residual liquid	≤1μL
Washing heads	1x8 or 1x12 heads
Plate types	Flat, U, V, C bottom
Washing method	Single-point, two points and multi points
Washing volume	50-2000μL, increase by 50μL
Washing times	99 times
Washing channels	3
Bottles	3pcs 2.5L washing bottle, 1pcs 2.5L waste bottle
Dispense accuracy	≤2% @300μL
Liquid injection accuracy	CV≤1.5% @ 300μL
Soaking and shaking time	19'59"
Data connection	USB
Weight	12kg
Power supply	AC110-240V, 50/60Hz

Ordering information

Code	Description
AS-16020-00	APW-200 Microplate Washer, 110V-240V
AS-16011-01	8 needles washing head
AS-16011-02	12 needles washing head
AS-16011-03	Washing liquid bottle
AS-16011-04	Waste liquid bottle

07 TSR-100 / TSR-200 Test Strip Reader



TSR-100



TSR-200

01

Description

TSR-100 and TSR-200 test strip reader are suitable for test the immunochromatographic test strips. By using modern photoelectric technology and photo-diode to detect the intensity of the reflected light, the reader can detect the color of the strip, then calculate the quanting or concentration. It can avoid reading mistake by eyes and make rapid, high sensitivity when using reader to detect the color change of test strip.



02

Easy to use and high accuracy

1. 6.2 inch touch screen for TSR-100
2. Powerful program design, it is easy to be used
3. Patented design offer good solutions guaranteed and excellent results
4. Each testing result is available to check and it can show the graph of the result
5. Build-in or external thermal printer
6. Rapid instrument calibration

03

Customization acceptable

1. Equipped specialized software of different test strips, increase or decrease detection program according to the manufacturers requirements
2. Support customization according to user needs
3. Test card and test strip for user flexible choice
4. Desktop and portable for user choice:
TSR-100 Desktop test strip reader
TSR-200 Portable test strip reader

04

TSR-100 Highlights

1. 6.2 inch touch screen for easy use
2. Strict calibration system for stable results
3. Automatically identify CT line position, Error correction range $\pm 3\text{mm}$
4. Fast and accurate test reduce human errors, automatic calculate concentration and judgment
5. Accurately identify one or more(up to 5) T lines value and CT ratio
6. Large built-in memory can save 10000 records
7. Build-in thermal printer
8. Powerful software, build-in 2 systems software (one for the end-user, another one for the reagent manufacturer)

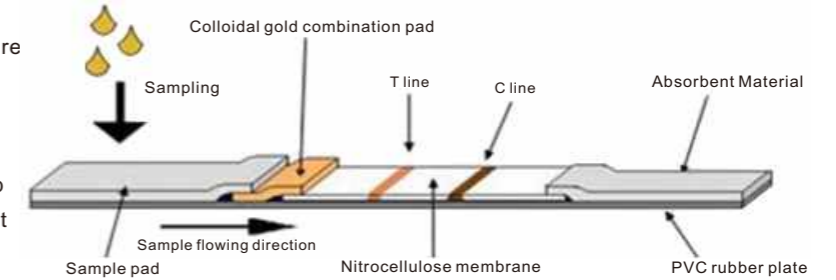
05

TSR-200 Highlights

1. Small size and light weight for easy carrying
2. Simply operation with 1~3 steps quantitative detection
3. Semi-automatic detection with high speed, test time only 5s except prepare sample time
4. Automatically identify CT line position, Error correction range $\pm 3\text{mm}$
5. Accurately identify one or more(up to 4) T lines value and CT ratio
6. Large built-in memory can save 10000 records
7. External thermal printer for printing reports
8. Powerful software, build-in 2 systems software (one for the end-user, another one for the reagent manufacturer)

Detection principle

Standard test strip structure as right picture these equipments detect sample positive or negative (concentration) by measuring reflection of light intensity of T and C line. These are also suitable for some test strip with several T lines. The TSR-100 can test 5 T lines and the TSR-200 can test 4 lines



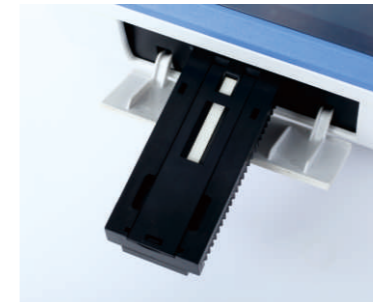
06

Remark for Test Strip Reader

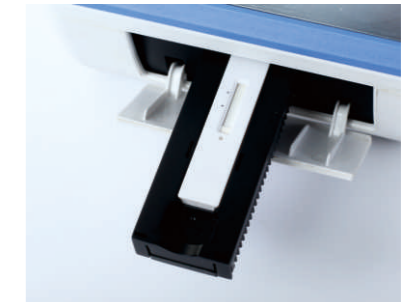
1. Test strip reader must match the test strip, cooperate with the manufacturer of test strip
2. Support customization according to test strip manufacturer needs
3. Fluorescence detection must be provided excitation wavelength, emission wavelength and life of fluorochrome

07

Adapter for TSR-100



■ Adapter S-100



■ Adapter C-100

07 Adapter for TSR-200



■ Adapter S-200



■ Adapter C-200

Specification		
Type	TSR-100	TSR-200
Wavelength	525±30nm (Base the requirement of customer)	525±30nm (Base the requirement of customer)
Detector Type	Photodiode	Photodiode
Test item	Immunochromatographic test cards or wide 2~6mm test strips	Immunochromatographic test cards or wide 2~6mm test strips
Parameter of test item	According to the requirement of test strips	According to the requirement of test strips
Delay-time test	Set delay-time, then, the test strip complete the reaction in the reader, timed automatic detection	Set delay-time, then, the test strip complete the reaction in the reader, timed automatic detection
Detection result	Multi-algorithm, quantitative, Selected results, save and print results	Multi-algorithm, quantitative, Selected results, save and print results
Test Speed	240 strips each hour	240 strips each hour
Repeatability	CV<2%	CV<2%
Stability	Drift values≤3% in 2 hours	Drift values≤3% in 2 hours
Data analysis	Qualitative, quantitative, semi-quantitative, Multi-algorithm	Qualitative, quantitative, semi-quantitative, Multi-algorithm
Display	6.2 inch touch screen	3.2 inch LCD
Connections	2 x USB	2 x USB
Number of T-line	4 lines	4 lines
Printer	Built-in Printer	External printer
Save Type	Built-in SD card (2GB)	Built-in SD card (4GB)
Power Adapter	DC12V 4A	DC9V 1.5A
Power	20W	9W
Dimensions (W x D x H) mm	320 x 195 x 156 mm	225 x 109 x 46mm
Weight	4kg	0.5kg

Ordering information

No.	Code	Description
01	AS-12010-00	TSR-100 Test Strip Reader, DC24V 2A (Standard: Adapter S-100)
02	AS-12011-01	Adapter C-100 for TSR-100
03	AS-12020-00	TSR-200 Portabel Test Strip Reader, DC9V 1.5A (Standard: Adapter S-200)
04	AS-12021-01	Adapter C-200 for TSR-200

08 TDH-500 Hybridization System

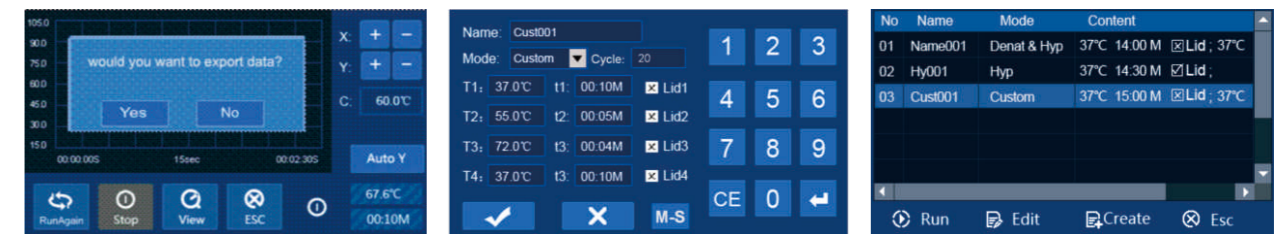


Description

Programmable system and humidifying that automates the steps in a slide-based FISH procedure, and provides walk-away convenience for clinical and research personnel. Up to 12 slides can be easily be added or removed with one hand. Two-side heating of slides that allows achieving exact correspondence of the set and actual temperature and maintaining uniform temperature across all slide positions. To built upon the innovative design, TDH-500 is ideally suited for the needs of cytogenetic laboratories to provide a good instrument.

Features

1. Touch screen easy to read, program and use
2. It can run In-situ PCR experiments
3. Possibility to export cycles data via USB memory
4. Four operation modes: denaturation/hybridization, hybridization fixed temperature, custom, In-situ PCR
5. Can be used as a fixed temperature slide warmer
6. Rapid temperature warm-up and accuracy of ±1°C
7. Superior temperature uniformity accross all slide positions
8. Perfect humidity control system



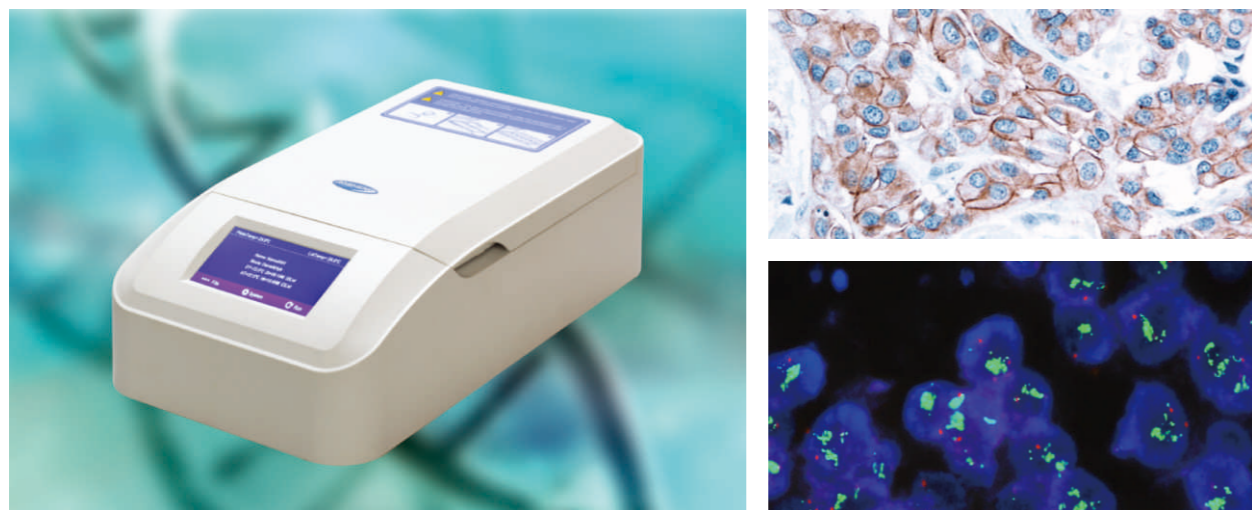
1. Touch screen display, easy programmable setting



2. Perfect humidity control system

3. Possibility to export cycles data

08 TDH-500 Hybridization System



Specification

Temperature Control Range	RT.+5°C-99.9°C
Temperature Accuracy	±1°C
Temperature Uniformity	±1°C
Temp. Display Accuracy	±0.1°C
Timer	1min~99h59min or 1sec~99 min59sec
Heating Time (37°C to 95°C)	≤3min
Cooling Time (95°C to 45°C)	≤7min
Temperature Control Programmable	30°C-100°C
Operation mode	Denaturation/Hybridization, Hybridization fixed temperature, Custom and In-situ PCR
Capacity	12 Slides
Display	Touch Screen
Overall Dimensions (L x D x H)mm	225 x 420 x 143mm
Weight	5.8kg

Ordering information

No.	Code	Description
01	AS-05010-00	TDH-500 AC120V, 3A or AC220V, 2A 50/60Hz

III Laboratory Instruments



01 iCEN-24/iCEN-24R High Speed Centrifuge

Features iCEN-24

1. Max. rotor capacity: 24×1.5/2.0ml
2. 3 different rotors are available
3. Max. speed: 14,680 rpm (21,400 × g)
4. Safe and reliable, various safety protections with CE safety standard
5. Soft-brake function to protect sensitive samples
6. Separate short-spin key for quick centrifugation
7. Automatic lid opening at the end of run - prevents sample warming and allows easy access to samples
8. Can be used in cold room

Features iCEN-24R

1. Max. rotor capacity: 24×1.5/2.0ml
2. 3 different rotors are available
3. Max. speed: 14,680 rpm (21,400 × g)
4. Temperature range from -10°C to +40°C
5. FastTemp for rapid pre-cooling of the centrifuge, less than 15min from 20°C to 4°C
4. Safe and reliable, various safety protections with CE safety standard
5. Soft-brake function to protect sensitive samples
6. Separate short-spin key for quick centrifugation
7. Continuous cooling keeps temperature constant, if no centrifugation takes place and the lid remains closed



iCEN-24



iCEN-24R
Powerful refrigeration capacity

Specification

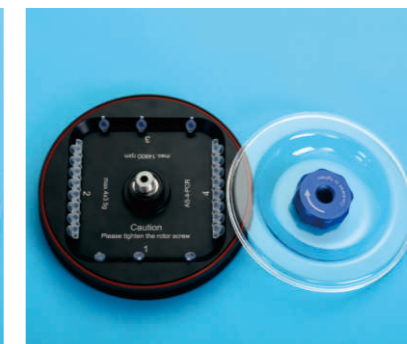
Model	iCEN-24	iCEN-24R
Speed (rpm)	500-15,000rpm (increment 100rpm)	500-15,000rpm (increment 100rpm)
Acceleration time	15s	15s
Deceleration time	15s	15s
Max. Capacity	24 x 1.5ml/2.0ml	24 x 1.5ml/2.0ml
Number of Rotors	3	3
Max. RCF	21,400 x g	21,400 x g
Soft braking function	YES	YES
Temperature control @ 4°C	----	±2°C
From 20°C to 4°C	----	≤15min
Temperature range	----	-10°C to +40°C
Max. Power	350W	500W
Dimensions (D x W x H) mm	260 × 410 × 225 mm	300 × 500 × 320 mm
Weight with one rotor	14kg	28kg
Timer	1s-99min59s (Short-spin)	1s-99min59s (Short-spin)
Power supply	AC100-120V/AC200-240V 50-60Hz	AC100-120V/AC200-240V 50-60Hz

Ordering information

No.	Code	Description
01	AS-08120-00	iCEN-24 High speed centrifuge, AC100-120V/AC200-240V, 50-60Hz
02	AS-08130-00	iCEN-24R High speed refrigerated centrifuge, AC100-120V/AC200-240V, 50-60Hz
03	AS-08121-01	24×1.5ml/2.0ml rotor
04	AS-08121-02	4-8×0.2ml PCR strip rotor
05	AS-08121-03	12×5ml rotor
06	AS-08041-01	Adapters for 0.5 - 0.6ml tubes
07	AS-08041-02	Adapters for 0.2ml tubes



24 × 1.5ml/2.0ml rotor



4-8×0.2ml PCR strip rotor



12 × 5ml rotor

02 Mini-15K High Speed Centrifuge

Features

1. Extremely quiet operation and easy-to-follow LCD display
2. Capacity: 12 x 1.5/2.0ml tubes
3. Low sample heating (only 12°C after 30min, at max.speed)
4. Autoclavable rotor (121°C, 20min), and includes standard rotor made of anodized aluminum
5. RPM/RCF setting as required
6. Timer can be set up to 99min
7. The small size of the unit makes it convenient for benchtop use or in a hood or in refrigerated environments



01
Operation interface



02
Rotor



Mini-15K

Specification

Model	Mini-15K
Max. rotational speed	14,500rpm
Max. RCF	14,000 x g
Timer	20sec-99min
Acceleration time to max. speed	15s
Braking time from max. speed	15s
Dimensions (D×W×H)mm	270 × 230 × 155mm
Power	100W

Ordering information

Code	Description
AS-08110-00	Mini-15K High speed centrifuge, 50/60Hz, 3A

Accessories

Code	Description
AS-08041-01	Adapters for 0.5 ml tubes
AS-08041-02	Adapters for 0.2 ml tubes

03 Mini-6KC/6KS/6KT and Mini-6K/7K/10K Mini Centrifuge

Features

1. Composite shell, shatter-resistant
2. The electronic braking system for rapid sample processing
3. Quick release rotor tub, allows for easy rotor exchange
4. Mini-6KC / Mini-6KS / Mini-6KT
Two speed options: 4,000 & 6,000rpm
5. Mini-6KC include 2 quick release interchangeable rotors
--8x1.5/2.0ml tube rotor, --4 place PCR Strip rotor
6. Mini-6KS: 3-in-1 rotor design, high capacity and time-saving
--6x1.5/2.0ml tubes, --6x0.5ml tubes, --2-8x0.2ml PCR strip tubes
7. Mini-6KT: Patented rotor design for 48-well 50ul PCR plate
Optional rotor: 4x5ml Eppendorf tube



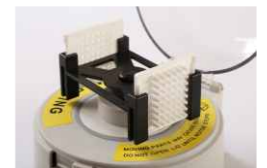
Mini-6KC



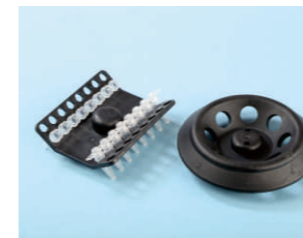
Mini-6KS
Patented 3-in-1 rotor design



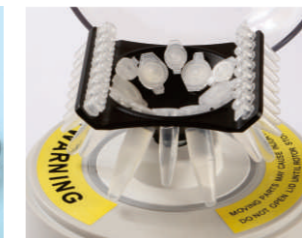
Mini-6KT



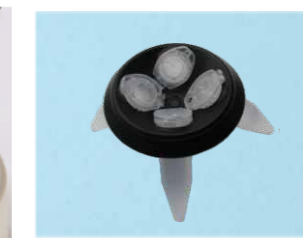
05
Mini-6KT 48-well 50ul PCR plate rotor



01
Mini-6KC quick release rotor



02
Mini-6KS 3-in-1 rotor



03
Mini-6KT 4x5ml tube rotor



04
Mini-6K/Mini-6KS/Mini-6KT
Two speed options



Mini-6K / Mini-7K / Mini-10K

04 MPC-25/Mini-P25 Mini-Plate Centrifuge

Features for MPC-P25

1. Unique design for the horizontal rotor centrifuge (Patented)
2. Short-spin and timing of two operations make the tests more convenient
3. Braking time from max.speed: less than 30sec
4. Timer can be set up to 10 minutes
5. Streamline design with more compact shape and transparent PC lid
6. It can accept below formats:
 - PCR standard plates with skirted, non-skirted
 - Elisa Plates
 - 8x0.2ml PCR strip tubes
 - 0.2ml PCR tubes

Specification

Model	Mini-6K	Mini-7K	Mini-10K	Mini-6KC	Mini-6KS	Mini-6KT
Rotor	6x1.5ml/2.0ml rotor 2x8x0.2ml strip rotor	6x1.5ml/2.0ml rotor 2x8x0.2ml strip rotor	6x1.5ml/2.0ml rotor	8x1.5ml/2.0ml rotor 4x8x0.2ml strip rotor	3-in-1 rotor (*)	48-well 50ul PCR rotor or 5x5ml tube rotor
Speed	6,000rpm	7,000rpm	10,000rpm	4,000 & 6,000rpm	4,000 & 6,000rpm	4,000 & 6,000rpm
Max.RCF	2,000 x g	2,300 x g	5,000 x g	1,200 & 2,000 x g	1,200 & 2,000 x g	1,200 & 2,000 x g
Dimensions	175x148x118mm	175x148x118mm	175x148x118mm	135x147x120mm	135x127x120mm	135x147x120mm
Weight	0.7kg	0.7kg	0.7kg	0.7kg	0.7kg	0.7kg
Power	AC100-240V	AC100-240V	AC100-240V	AC100-240V	AC100-240V	AC100-240V

*3-in-rotor ---- 6x1.5/2.0ml, 6x0.5ml tubes and 2-8x0.2ml PCR strip rotor

Ordering information

No.	Code	Description
01	AS-08060-00	Mini-6K, AC100-240V, 50/60Hz
02	AS-08070-00	Mini-7K, AC100-240V, 50/60Hz
03	AS-08080-00	Mini-10K, AC100-240V, 50/60Hz
04	AS-08020-00	Mini-6KC, AC100-240V, 50/60Hz
05	AS-08030-00	Mini-6KS, AC100-240V, 50/60Hz
06	AS-08100-00	Mini-6KT, AC100-240V, 50/60Hz

Accessories

Mini-6K/Mini-7K/Mini-10K		Mini-6KC		Mini-6KS	
AS-08061-01	Allen wrench	AS-08021-01	8 x 1.5/2.0ml rotor	AS-08031-01	6x1.5/2.0ml, 6x0.5ml tubes & 2-8x0.2ml PCR Strip rotor
AS-08061-02	6 x 1.5/2.0ml rotor	AS-08021-02	4 x 8 x 0.2ml strip rotor		
AS-08061-03	2 x 8 x 0.2ml strip rotor	AS-08061-05	Adapters for 0.5/0.6ml tubes	Mini-6KT	
AS-08061-04	Slide rotor	AS-08061-06	Adapters for 0.2ml tubes	AS-08101-01	48 well 50ul PCR plate rotor
AS-08061-05	Adapters for 0.5/0.6ml tubes			AS-08101-02	4x5ml tubes rotor
AS-08061-06	Adapters for 0.2ml tubes			AS-08101-03	Adapter for 5ml normal tubes

MPC-P25



01

MPC-P25 Operation



■ PCR plates



■ Elisa plates



■ 2pcs PCR plates with skirt or without skirt



■ 8 x 0.2ml PCR strip tubes

Specification

Model	MPC-P25
Max. rotational speed	2,200rpm
Max. RCF	480 x g
Capacity	2pcs PCR plates / Elisa plate / 8x0.2ml PCR strip tubes / 0.2ml PCR tubes
Weight	3.6kg
Dimensions (W x D x H)mm	290 x 360 x 140mm
Power supply	AC220V/AC120V, 50/60Hz

02
MPC-P25

Adaptor for PCR plates with skirt and without skirt



03
MPC-P25

Adaptor for 8x0.2ml strip or 0.2ml PCR tubes



Ordering information

No.	Code	Description
01	AS-08090-00	MPC-P25 Mini-Plate Centrifuge, AC120V or AC220V, 50/60Hz
02	AS-08091-01	Adaptor for PCR plates with skirt and without skirt
03	AS-08091-02	Adaptor for 8x0.2ml strip or 0.2ml PCR tubes

Mini-P25



Features for Mini-P25

1. Quickly spin down droplets
2. Use before and after thermal cycling to increase PCR yield
3. Accepts skirted, non-skirted and all standard PCR plates
4. Less than 1/4 the size of most plate centrifuges

Specification

Model	Mini-P25
Max. rotational speed	2,500rpm
Max. RCF	500 x g
Capacity	2pcs PCR plate
Weight	2.1kg
Dimensions (W x D x H)mm	190 x 220 x 186
Power supply	AC120V/AC220V, 50/60Hz

Ordering information

No.	Code	Description
01	AS-08010-00	Mini-P25 Mini-Plate Centrifuge

01 IB-10HL/IB-20HL Dry Bath Incubator

Features

1. Quick and easy-to-exchange Blocks
2. Special-designed blocks improves temperature homogeneity
3. Heating lid function available for turn on / off
4. Individual sensor-controlled blocks allow for block-specific calibration
5. Wifi-function is available with the APP software
6. IB-20HL hold a software with a strong functions (Thermal cycler's software function)
 - Set and display temperature, time and lid temperature
 - Set 9 programs and 99 cycles
 - Link programs function



IB-10HL



IB-20HL

Can be set and operation PCR program

Easy to exchange blocks



Specification		
Model	IB-10HL	IB-20HL
Temperature control range	RT.+5°C~105°C	-5°C~105°C (If Ambient Temperature≤20°C) 0°C~105°C (If Ambient Temperature≤25°C) 4°C~105°C (If Ambient Temperature≤30°C)
Lid's temperature range	RT.+5°C~110°C	RT.+5°C~110°C
Timer range	0~99h59min / 0~99min59sec	0~99h59min/0~99min59sec
Temp. accuracy for blocks	±0.5°C	±0.5°C
Temp. accuracy for lid	±1°C	±1°C
Uniformity within the block	±0.5°C	±0.5°C
Display accuracy	0.1°C	0.1°C
Heating time	≤15min (from 40°C to 100°C)	Heating speed: (37°C-100°C)≥6°C/min
Cooling time	—	Cooling speed: (100°C-37°C)≥6°C/min
Dimensions (W x D x H)mm	267 × 166 × 167mm	313 × 168 × 196mm
Weight	2.3kg	3.0kg

Ordering information	
Code	Description
AS-01270-00	IB-10HL, AC100~240V, 50/60Hz, 120W
AS-01280-00	IB-20HL, AC100~240V, 50/60Hz, 120W

Accessories		
IB-10HL		
Code	Block	Description
AS-01271-01	IB10-A	96×0.2ml PCR tubes
AS-01271-02	IB10-B	54×0.5ml tubes
AS-01271-03	IB10-C	35×1.5ml tubes
AS-01271-04	IB10-D	35×2.0ml tubes
AS-01271-05	IB10-E	15×0.5ml+20×1.5ml tubes
AS-01181-28	T4	Block extraction tool
IB-20HL		
Code	Block	Description
AS-01281-01	IB20-A	96×0.2ml PCR tubes
AS-01281-02	IB20-B	54×0.5ml tubes
AS-01281-03	IB20-C	35×1.5ml tubes
AS-01281-04	IB20-D	35×2.0ml tubes
AS-01281-05	IB20-E	15×0.5ml+20×1.5ml tubes
AS-01181-28	T4	Block extraction tool



02 MiniT Series Mini-Dry Bath Incubator

Features

1. LCD display. It is easy to set and use
2. Small footprint: MiniT series are a personal sized that fits in the palm on your hand
3. Simultaneous display actual time, temperature
4. Temperature deflection adjusting meet with different demands
5. Beep-signal/Stop after program completed
6. With DC12V or DC24V power for total portability, beep-signal/stop after program completed
7. Interchangeable aluminum alloy sample blocks provide versatility and allow easy cleaning and disinfecting



Specification				
Model	MiniT	MiniT-C	MiniT-100	MiniT-100H
Temperature control range	RT.+5-80°C	0°C-100°C	RT.+5°C-100°C	RT.+5°C-100°C
Timer range	1-999min or 1-999sec	1-999min or 1-999sec	1-999min or 1-999sec	1-999min or 1-999sec
Temp. control accuracy	±0.5°C	±0.5°C	±0.5°C	±0.5°C
Display accuracy	±0.1°C	±0.1°C	±0.1°C	±0.1°C
Heating time (25°C to Max.)	≤12min	≤20min	≤15min	≤15min
Cooling time (25°C to 0°C)	—	≤25min	—	—
Temp. control accuracy	±0.3°C	±0.3°C	±0.3°C	±0.3°C
Heating Lid	—	—	—	Heating Lid
Lid's temperature range	—	—	—	RT.+5°C-100°C
Dimensions (W x D x H)mm	150 × 110 × 100 mm	162 × 110 × 140 mm	152 × 120 × 112 mm	152 × 120 × 112 mm
Weight	0.5kg	1.0kg	0.8kg	0.9kg
Power supply	DC 12V	DC 12V	DC 24V	DC 24V

03 MiniT-H2C/MiniT-H3 Mini-Dry Bath Incubator

Features

1. Working area dimension: 3 individual controller
2. LCD display. It is easy to set and use
3. Simultaneously display the set and actual time, temperature, Auto-stop and sound-alert after program completed
4. Temperature deflection adjusting meet different demands
5. MiniT-H3 has a heating function only and its temperature ranges from RT.+5~100°C
6. MiniT-H2C has cooling/heating function and its temperature ranges from 0°C~99.9°C



MiniT-H2C/MiniT-H3

Specification

Model	MiniT-H3			MiniT-H2C		
	Block - A	Block - B	Block - C	Block - A	Block - B	Block - C
Working area	Block - A	Block - B	Block - C	Block - A	Block - B	Block - C
Temperature Control Range	RT.+5~99.9°C	RT.+5~99.9°C	RT.+5~99.9°C	0~99.9°C	RT.+5~99.9°C	RT.+5~99.9°C
Heating time (25°C to 99.9°C)	≤20min	≤20min	≤20min	≤20min	≤20min	≤20min
Cooling time (25°C to 99.9°C)	--	--	--	≤25min (*)	--	--
Temp. control accuracy	≤0.5°C			≤0.5°C		
Temp. stability @37°C	0.2°C			0.2°C		
Display accuracy	0.1°C			0.1°C		
Timer range	1~ 999h or 1~ 999min or 1~ 999sec			1~999h or 1~999min or 1~999sec		
Block quantity	3			3		
Power supply	DC12V,120W			DC12V,120W		
Dimensions (mm)	360×180×150			360×180×150		
Weight	3kg			3kg		

*1. Tested in ambient temperature <25°C

Ordering information

No.	Code	Description
01	AS-01130-00	MiniT mini dry bath, DC12V, 40w
02	AS-01170-00	MiniT-C mini dry bath, DC12V, 60w
03	AS-01150-00	MiniT-100 mini dry bath, DC24V, 40w
04	AS-01160-00	MiniT-100H mini dry bath, DC24V, 50w
05	AS-01220-00	MiniT-H3 3-in-1 mini dry bath
06	AS-01230-00	MiniT-H2C 3-in-1 mini dry bath

Accessories

No.	Code	Type	Description
01	AS-01131-01	A-MinT	40×0.2ml tubes
02	AS-01131-02	B-MinT	24×0.5ml tubes
03	AS-01131-03	C-MinT	15×1.5ml tubes
04	AS-01131-04	D-MinT	15×2.0ml tubes
05	AS-01131-05	E-MinT	8×12.5×12.5ml cuvette block
06	AS-01131-06	F-MinT	4×15ml tubes
07	AS-01131-07	G-MinT	2×50ml tubes
08	AS-01131-99		Can be customized according to customer demand

Note: MiniT-100H can just use A-MiniT block and can not exchange!

MiniT series and MiniT-H2C/MiniT-H3 blocks



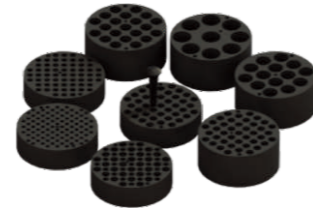
04 K30 Dry Bath Incubator



Specification

Model	K30
Temperature control range	RT.+5°C-100°C
Timer range	1min~99h59min
Temp. control accuracy	±0.5°C
Heating time (20°C to 100°C)	≤15min
Certificate	CE
Dimensions (L×W×H)mm	225×160×197
Weight	3kg

Blocks for K30



Ordering information

No.	Code	Description
01	AS-01030-00	K30, AC220V/AC120V, 50/60Hz, 100W

Accessories

No.	Code	Type	Description
01	AS-01031-01	A-30	96×0.2ml tubes
02	AS-01031-02	B-30	29×0.5ml+32×1.5ml tubes
03	AS-01031-03	C-30	61×0.5ml tubes
04	AS-01031-04	D-30	41×1.5ml tubes
05	AS-01031-05	E-30	41×2.0ml tubes
06	AS-01031-06	F-30	61×Φ6mm tubes
07	AS-01031-07	H-30	28×Φ12mm tubes
08	AS-01031-08	I-30	28×Φ13mm tubes
09	AS-01031-09	J-30	21×Φ15mm tubes
10	AS-01031-10	K-30	21×Φ16mm tubes
11	AS-01031-11	L-30	17×Φ18mm tubes
12	AS-01031-12	M-30	14×Φ20mm tubes
13	AS-01031-13	N-30	9×Φ25mm tubes
14	AS-01031-14	O-30	4×Φ32mm tubes

05 MK-10/MK-20 Dry Bath Incubator

Features

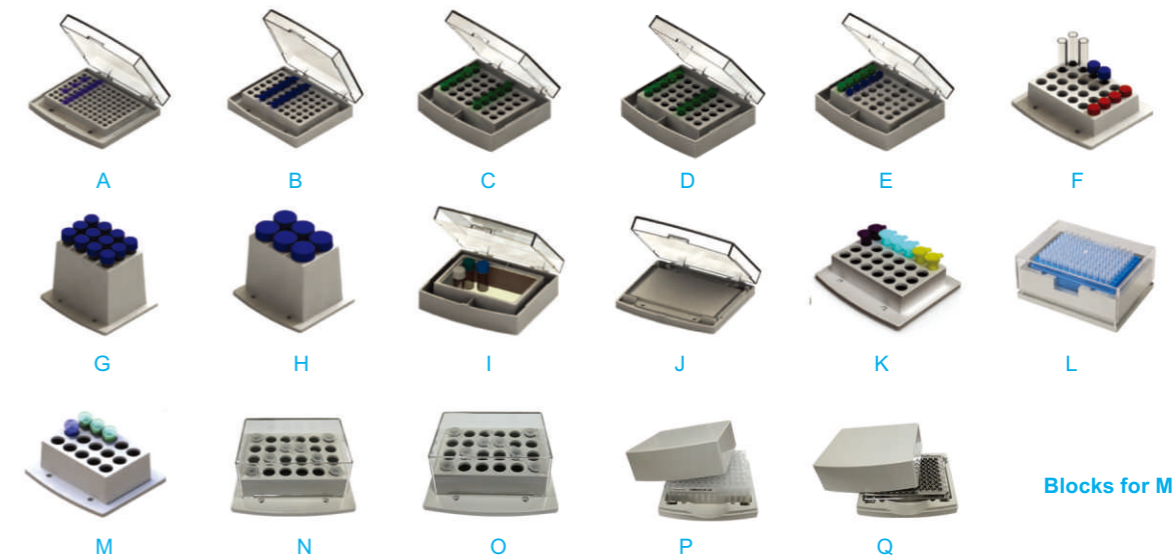
1. LCD display. It is easy to set up and use
2. Simultaneous display of set and actual time, temperature
3. Temperature deflection adjusting meet with different demands
4. Easy to replace the metal blocks and simple to clean and sterilize
5. Microprocessor controlled incubation time and temperature
6. Beep-signal/Stop after program completed
7. Peltier design of MK-20 provides efficient thermal control



MK-10



MK-20



Blocks for MK-10/MK-20

Specification

Model	MK-10	MK-20
Temperature control range	RT.+5°C-100°C	-10°C-100°C
Timer range	1min - 99h59min	1min - 99h59min
Tem. stability @100°C	±0.5°C	±0.5°C
Display accuracy	±0.1°C	±0.1°C
Heating time (25°C to 100°C)	≤12min	≤15min
Cooling time (20°C to -10°C)	--	≤15min (20°C to -5°C) if the room temperature is lower than 30°C) ≤15min (20°C to -10°C) if the room temperature is lower than 25°C)
Certificate	CE	CE
Dimensions (L×W×H)mm	300 × 220 × 180mm	300 × 220 × 180mm
Weight	2.5kg	5kg

Ordering information

No.	Code	Description
01	AS-01040-00	MK-10 (Heating), AC220V/120V, 50/60Hz, 150W
02	AS-01050-00	MK-20 (Heating/Cooling), AC220V/120V, 50/60Hz, 200W

Accessories

No.	Code	Type	Description	The highest Temperature	The lowest Temperature
01	AS-01051-01	A	96 x 0.2ml tubes	100°C	-10°C
02	AS-01051-02	B	54 x 0.5ml tubes	100°C	-10°C
03	AS-01051-03	C	35 x 1.5ml tubes	100°C	-10°C
04	AS-01051-04	D	35 x 2.0ml tubes	100°C	-10°C
05	AS-01051-05	E	15 x 0.5ml+20 x 1.5ml tubes	100°C	-10°C
06	AS-01051-06	F	24 x diameter ≤ Φ12mm tubes	100°C	0°C
07	AS-01051-07	G	12 x 15ml Falcon	100°C	0°C
08	AS-01051-08	H	6 x 50ml Falcon	100°C	0°C
09	AS-01051-09	I	103 x 67 x 30ml Bath Block	100°C	0°C
10	AS-01051-10	J	96 x 0.2ml Microplate	100°C	0°C
11	AS-01051-11	K	24 x 5ml tubes	100°C	0°C
12	AS-01051-12	L	96-Deep well plate	80°C	8°C
13	AS-01051-13	M	15 x 5ml Eppendorf tubes	100°C	0°C
14	AS-01051-14	N	24 x 2ml tubes (Deep-hole)	100°C	0°C
15	AS-01051-15	O	24 x 1.5ml tubes (Deep-hole)	100°C	0°C
16	AS-01051-16	P	Deepwell plates 96/1000µL	100°C	0°C
17	AS-01051-17	Q	MTPs and Deepwell-Platten	100°C	0°C

06 MK200 Series High Temperature Dry Bath Incubator

Features

MK200 series high temperature dry bath incubator, the highest temperature of MK200-1 and MK200-2 can reach 150°C. The highest temperature of MK200-4 can reach 120°C



MK200-1



MK200-1A



Blocks for MK200 Series



MK200-2



MK200-4

Ordering information

No.	Code	Description
01	AS-01080-00	MK200-1, AC220V/AC120V, 50/60Hz, 200W
02	AS-01090-00	MK200-1A, AC220V/AC120V, 50/60Hz, 200W
03	AS-01100-00	MK200-2, AC220V/AC120V, 50/60Hz, 400W
04	AS-01110-00	MK200-4, AC220V/AC120V, 50/60Hz, 600W

Specification

Model	MK200-1	MK200-1A	MK200-2	MK200-4
Temperature control range	RT.+5°C-150°C	RT.+5°C-150°C	RT.+5°C-150°C	RT.+5°C-120°C
Timer range	1min-99h59min	1min-99h59min	1min-99h59min	1min-99h59min
Tem. stability @100°C	±0.5°C	±0.5°C	±0.5°C	±0.5°C
Temp. control accuracy @40°C	±0.3°C	±0.3°C	±0.3°C	±0.3°C
Temp. control accuracy @120°C	±1°C	±1°C	±1°C	±1°C
Heating time (40°C to 150°C)	≤30min	≤30min	≤30min	≤30min
Display accuracy	0.1°C	0.1°C	0.1°C	0.1°C
Dimensions (L×W×H)mm	280 × 240 × 110mm	280 × 240 × 110mm	280 × 240 × 110mm	380 × 240 × 110mm
Block quantity	1	1	2	4
Display screen	LED	LED	LED	LED

Accessories

No.	Code	Type	Description	Dimensions (mm)
01	AS-01081-01	BK01	49×Φ6mm	96×96×49mm
02	AS-01081-02	BK02	49×Φ7mm	96×96×49mm
03	AS-01081-03	BK03	25×Φ10mm	96×96×49mm
04	AS-01081-04	BK04	25×Φ12mm	96×96×49mm
05	AS-01081-05	BK05	25×Φ13mm	96×96×49mm
06	AS-01081-06	BK06	12×Φ15mm	96×96×49mm
07	AS-01081-07	BK07	16×Φ15mm	96×96×49mm
08	AS-01081-08	BK08	12×Φ16mm	96×96×49mm
09	AS-01081-09	BK09	16×Φ16mm	96×96×49mm
10	AS-01081-10	BK10	12×Φ19mm	96×96×49mm
11	AS-01081-11	BK11	16×Φ19mm	96×96×49mm
12	AS-01081-12	BK12	9×Φ20mm	96×96×49mm
13	AS-01081-13	BK13	9×Φ26mm	96×96×49mm
14	AS-01081-14	BK14	4×Φ28mm	96×96×49mm
15	AS-01081-15	BK15	4×Φ40mm	96×96×49mm
16	AS-01081-16	BK16	49×0.5ml tubes	96×96×49mm
17	AS-01081-17	BK17	25×1.5ml tubes	96×96×49mm
18	AS-01081-18	BK18	25×2.0ml tubes	96×96×49mm
19	AS-01091-01	BK19	96×0.2ml tubes	78×114×26mm
20	AS-01091-02	BK20	96×0.2ml ELISA plate	81×123×19mm

BK19 and BK20 can only be used in MK200-1A

07 MK2000 Series Dry Bath Incubator

Description

MK2000 series dry bath incubator are ideal for incubation and activation of cultures, enzyme reactions, immunoassays, melting/boiling points and a wide variety of other laboratory procedures

Features

1. Exceptional temperature uniformity and accuracy
2. Wide range of interchangeable aluminium blocks, blocks are accessories for all applications
3. Block extraction tool is supplied, allowing blocks to be removed easily
4. Blocks as accessories for all applications -- tubes, vials and microplates
5. Auto-stop and sound-alert after program completed

Special features of MK2000-2HL

1. Touch screen allows for easy to read and easy programming and easy to use
2. Hold a heating lid, 60 user programmable settings
3. Programmable system, program link functions, it can be run some simple PCR tests



MK2000-1



MK2000-2



Blocks for MK2000 Series



MK2000-2E
Each block can be set at different temperatures



MK2000-2HL
Can run some simple PCR tests

Specification

Model	MK2000-1	MK2000-2	MK2000-2E	MK2000-2HL
Temperature control range	RT.+5°C-105°C	RT.+5°C-105°C	RT.+5°C-105°C	RT.+5°C-100°C
Timer range	1min - 99h59min	1min - 99h59min	1min - 99h59min	1min - 99h59min
Temp. stability @100°C	≤0.5°C	≤0.5°C	≤0.5°C	≤0.5°C
Uniformity: within the block @37°C	±0.2°C	±0.2°C	±0.2°C	±0.2°C
Across similar block @37°C	----	±0.3°C	----	±0.3°C
Heating time (25°C to 100°C)	≤20min	≤20min	≤20min	≤20min
Display accuracy	0.1°C	0.1°C	0.1°C	0.1°C
Block quantity	1	2	2 (Independent)	2
Dimensions (L×W×H)mm	250×190×130mm	365 × 210 × 150 mm	365 × 210 × 150mm	420 × 225 × 145 mm
Weight	2.5kg	4.5kg	4.5kg	5.5kg

Ordering information

No.	Code	Description
01	AS-01180-00	MK2000-1, AC220V/AC120V, 50/60Hz, 100W
02	AS-01190-00	MK2000-2, AC220V/AC120V, 50/60Hz, 200W
03	AS-01120-00	MK2000-2E, AC220V/AC120V, 50/60Hz, 200W
04	AS-01210-00	MK2000-2HL (Heating lid), AC220V/AC120V, 50/60Hz, 200W

Accessories

Code	Type	Description	Code	Type	Description
AS-01181-01	BH01	96 x 0.2ml PCR tubes	AS-01181-15	BH15	40 x Φ6mm tubes
AS-01181-02	BH02	45 x 0.5ml tubes	AS-01181-16	BH16	28 x Φ10mm tubes
AS-01181-03	BH03	35 x 1.5ml tubes	AS-01181-17	BH17	24 x Φ12mm tubes
AS-01181-04	BH04	35 x 2.0ml tubes	AS-01181-18	BH18	24 x Φ13mm tubes
AS-01181-05	BH05	15 x 0.5ml+20 x 1.5ml tubes	AS-01181-19	BH19	14 x Φ15mm tubes
AS-01181-06	BH06	20 x 1.5+15 x 2.0ml tubes	AS-01181-20	BH20	14 x Φ16mm tubes
AS-01181-07	BH07	32 x 0.2+22 x 0.5+9 x 1.5ml tubes	AS-01181-21	BH21	12 x Φ19mm tubes
AS-01181-08	BH08	20 x 5ml tubes	AS-01181-22	BH22	11 x Φ20mm tubes
AS-01181-09	BH09	20 x 10ml tubes	AS-01181-23	BH23	6 x Φ26mm tubes
AS-01181-10	BH10	12 x 15ml tubes	AS-01181-24	BH24	6 x Φ28mm tubes
AS-01181-11	BH11	6 x 50ml tubes	AS-01181-25	BH25	2 x Φ40mm tubes
AS-01181-12	BH12	96 x 0.2ml Elisa plate or 4 slides	AS-01181-26	BH26	2 x 7-12.5 x 12.5 cuvette
AS-01181-13	BH13	Solid block (no holes)	AS-01181-27	PT1000	External temperature probe
AS-01181-14	BH14	384 well PCR Plate	AS-01181-28	T4	Block extraction tool
AS-01181-15			AS-01211-01	L4	Stainless plate

MK2000-2HL can just use the BH01~ BH07 blocks, L4 is special for MK2000-2HL

01 MS-100/MSC-100 Thermo Shaker Incubator

Description

MS-100/MSC-100 thermo shaker incubator designed for simultaneous heating, cooling and mixing of small samples. Both of them can be supplied with interchangeable blocks for microtubes.

Features

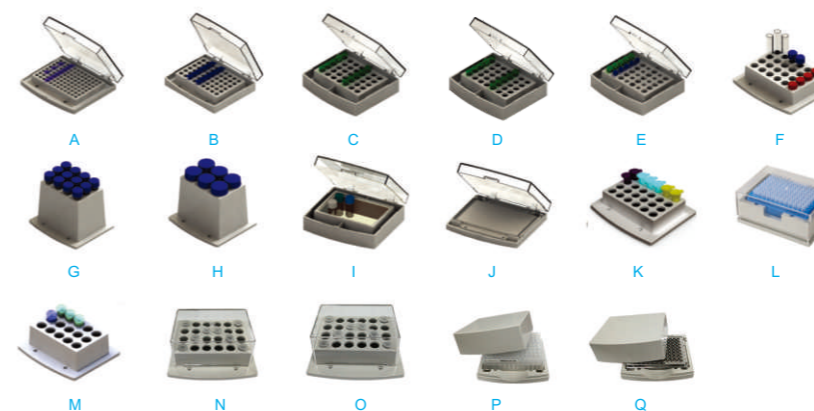
1. LCD display. It is easy to set up and use
2. Accurately control and display time, temperature and speed
3. Over-heating protection device ensures safety & reliability
4. Low noise working even under the speed of 1,500rpm
5. Easy to replace the metal blocks and is very simple to clean and sterilize
6. Peltier design of MSC-100 provides thermal control in a compact unit



MS-100



MSC-100



Blocks for MSC-100 /MS-100

Specification

Model	MS-100	MSC-100	TMS-200	TMS-300
Temperature Control Range	RT.+5°C-100°C	0°C~100°C (if Ambient temp.≤20°C) 4°C~100°C (if Ambient temp.≤25°C) 10°C~100°C(if Ambient temp.≤30°C)	RT.+5°C-100°C	RT.+5°C-100°C
Temperature uniformity	≤0.5°C	≤0.5°C	≤0.5°C	≤0.5°C
Timer range	1min~99h59min	1min~99h59min	1min~99h59min	1min~99h59min
Temp. control accuracy	±0.5°C	±0.5°C	±0.25°C(≤37°C) ±0.5°C (≤95°C)	±0.25°C(≤37°C) ±0.5°C (≤95°C)
Display accuracy	±0.1°C	±0.1°C	±0.1°C	±0.1°C
Mixing Speed	200-1500rpm*	200-1500rpm*	300-3000rpm	300-2000rpm
Heating Time (25-100°C)	≤12min	≤15min	≤12min	≤12min
Cooling Time	----	≤30min (from RT. to RT.-20°C) ** ≤5min (from 100°C to 20°C) **	----	----
Mixing Orbit	2mm	2mm	2mm	3mm
Dimensions (mm)	300 x 220 x 170	300 x 220 x 170	230 x 170 x 165	230 x 170 x 165
Weight	7kg	8.5kg	5.5kg	5.5kg

*Temperature and oscillation speed limit according to the type of block

**Tested in ambient temperature <25°C

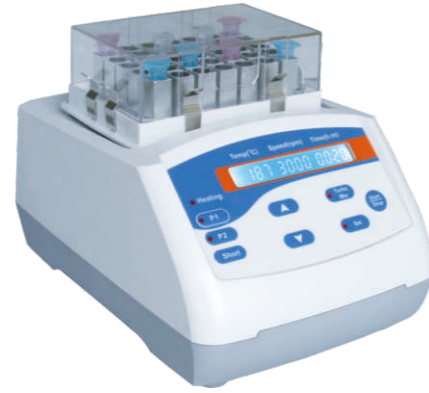
02 TMS-200/TMS-300 Thermo Shaker Incubator

Features

1. Thermo shaker for microplates, tubes, and glass vials
2. Fast shaking and mixing up to 3,000rpm
3. Perfectly controlled 3-dimensional mixing prevents spilling and lid wetting
4. 2 programmable soft keys, integrated vortex and short mix functions
5. Very small, light, efficient and quiet
6. Adapter plates:
 - Microplates: - 96-, 384-, 1536-well microplates/deepwell plates/PCR plates
 - Holder: - 0.2ml PCR tubes holder, 0.5ml tubes holder, 1.5/2.0ml tubes holder
- 15ml Micro tubes holder, 50ml Micro tubes holder
 - Block: -10 types Aluminum blocks for user choosing



TMS-200



TMS-300



Blocks for TMS-200/TMS-300

Ordering information

No.	Code	Description
01	AS-02010-00	MS-100 Thermo Shaker, AC220V/AC120V, 50/60Hz, 50W
02	AS-02020-00	MSC-100 Thermo Shaker, AC220V/AC120V, 50/60Hz, 250W
03	AS-02050-00	TMS-200 Thermo Shaker, AC100V-240V, 50/60Hz, 150W
04	AS-02060-00	TMS-300 Thermo Shaker, AC100V-240V, 50/60Hz, 150W

Accessories

MS-100 / MSC-100					
No.	Code	Type	Description	Max. Temp.	Max. speed
01	AS-01051-01	A	96 x 0.2ml tubes	100°C	1500rpm
02	AS-01051-02	B	54 x 0.5 tubes	100°C	1500rpm
03	AS-01051-03	C	35 x 1.5 tubes	100°C	1500rpm
04	AS-01051-04	D	35 x 2.0 tubes	100°C	1500rpm
05	AS-01051-05	E	15 x 0.5ml+20 x 1.5ml tubes	100°C	1500rpm
06	AS-01051-06	F	24 x dimensions≤12mm tubes	100°C	1200rpm
07	AS-01051-07	G	12 x 15ml Falcon	100°C	750rpm
08	AS-01051-08	H	6 x 50ml Falcon	100°C	750rpm
09	AS-01051-09	I	103 x 67 x 30mm Bath Block	100°C	1500rpm
10	AS-01051-10	J	96 x 0.2ml Microplate	100°C	1500rpm
11	AS-01051-11	K	24 x 5ml tubes	100°C	1200rpm
12	AS-01051-12	L	96-Deep well plate	80°C	800rpm
13	AS-01051-13	M	15 x 5ml Eppendorf tubes	100°C	1200rpm
14	AS-01051-14	N	24 x 2ml tubes (Deep-hole)	100°C	1200rpm
15	AS-01051-15	O	24 x 1.5ml tubes (Deep-hole)	100°C	1200rpm
16	AS-01051-16	P	Deepwell plates 96/1000μL	100°C	1200rpm
17	AS-01051-17	Q	MTPs and Deepwell-Platten	100°C	1200rpm
TMS-200 / TMS-300					
No.	Code	Type	Description	Max. speed	
01	AS-02051-01	A-200	96 x 0.2ml tubes	1700	1500rpm
02	AS-02051-02	B-200	54 x 0.5ml tubes	1700	1500rpm
03	AS-02051-03	C-200	35 x 1.5ml tubes	1700	1500rpm
04	AS-02051-04	D-200	35 x 2.0ml tubes	1700	1500rpm
05	AS-02051-05	E-200	15 x 0.5ml+20 x 0.5ml tubes	1700	1500rpm
06	AS-02051-06	F-200	24 x dimensions≤12mm tubes	1500	1200rpm
07	AS-02051-07	G-200	32 x 0.2ml+25 x 1.5ml tubes	1700	1500rpm
08	AS-02051-08	H-200	32 x 0.2ml+10 x 0.5ml+15 x 1.5ml tubes	1700	1500rpm
09	AS-02051-09	I-200	103 x 67 x 30mm Bath Block	1500	1200rpm
10	AS-02051-10	J-200	96 x 0.2ml Elisa plate	1700	1500rpm
11	AS-02051-11	K-200	24 x 5ml tubes	1500	1200rpm
12	AS-02031-01	MIX-A	96 x 0.2ml PCR tube holder	3000	2000rpm
13	AS-02031-02	MIX-B	24 x 0.5ml tube holder	3000	2000rpm

In the table fittings of TMS-200/TMS-300 above:

The number in red means Max. speed when this block in TMS-200, and the number in black means Max. speed when this block in TMS-300

03 MB100-2A/MB100-4A Thermo Shaker Incubator for plates MK100-2A/MK100-4A Incubator for plates

Description

MB100-2A/MB100-4A, MK100-2A/MK100-4A are designed for 1-4 standard 96 well plates in the thermostat mode. MK100-2A, MK100-4A only have incubation functions. MB100-2A, MB100-4A have incubation and shaking functions. A distinctive feature for the MB100-2A, MB100-4A and MK100-2A, MK100-4A is two-side heating of microtest plates that allows achieving exact correspondence of the set and actual temperature in wells of the microtest plates

Features

1. Heating plates above and below the microplates
2. Exact correspondence of the designed and actual temperature
3. LCD display. It is easy to set up and use
4. MB series have incubation and shaking functions

MB100-2A/MK100-2A



MB100-4A/MK100-4A

Specification

Model	MK100-2A	MB100-2A	MK100-4A	MB100-4A
Temperature control range	RT.+5°C--70°C	RT.+5°C--70°C	RT.+5°C--70°C	RT.+5°C--70°C
Timer range	1min-99h59min	1min-99h59min	1min-99h59min	1min-99h59min
Temp. control accuracy	±0.5°C	±0.5°C	±0.5°C	±0.5°C
Display accuracy	±0.1°C	±0.1°C	±0.1°C	±0.1°C
Shaking Speed	----	100-1200rpm	----	100-1500rpm
Mixing Orbit	----	2mm	----	2mm
Heating Time (20 to 70°C)	≤20min	≤20min	≤20min	≤20min
Platform Capacity	2 plates	2 plates	4 plates	4 plates
Dimensions (mm)	280×270×150 mm	280×270×150 mm	320×350×185 mm	320×350×185 mm
Weight	4kg	6.5kg	8kg	9kg

Ordering information

No.	Code	Description
01	AS-01140-00	MK100-2A, AC100-240V, 50/60Hz, 150W
02	AS-03030-00	MB100-2A, AC100-240V, 50/60Hz, 150W
03	AS-01060-00	MK100-4A, AC120/220V, 50/60Hz, 200W
04	AS-03020-00	MB100-4A, AC120/220V, 50/60Hz, 300W

04 MX100-4A Microplate Shaker

Description

The MX100-4A is designed for shaking ELISA plate(96 well plates), TCPS and 1.5/2.0ml centrifuge tubes

Features

1. Continuous or timing operation
2. DC brushless motor for gentle and powerful vibration
3. Orbital of 3mm for efficient mixing in small sample vessels
4. Simple spring holders for easy and quick plate installation



MX100-4A

Specification

Model	MX100-4A
Speed Setting Resolution	10rpm
Speed	200~1500rpm @Standard / 200~1000rpm @Deep well plate or tube holder
Timer range	1min~99h59min
Mixing Orbit	3mm
Input Power	AC100V -240V
Dimensions (mm)	290 x 270 x 120 mm
Weight	6.5kg

Ordering information

No.	Code	Description
01	AS-04040-00	MX100-4A Microplate shaker
02	AS-02041-01	20x1.5ml tube holder (apolegamy)
03	AS-02041-02	20x0.5m tube holder (apolegamy)

05 MTV-1 Mini Vortex

Description

Mini vortex is the ideal vortex mixer for every lab with its compact size, easy of use, and its economic price point. The 2,500rpm fixed speed ensures there is no sacrificing any mixing power. It requires little working space and is easy-to-use.

Features

1. Touch activated vortex mixer, stable compact design
2. 2,500rpm fixed vortexing speed, powerful vortexing for tubes up to 15ml
3. MTV-1 is with a power adapter and a battery case



Specification

Model	MTV-1
Working style	Continues / Short-Spin
Shaking movement	Orbital
Mixing Orbit	3mm
Speed Range	800~2500rpm
Dimensions (mm)	74 x 91 x 84mm
Input Power	DC6V
Weight	0.35Kg

Ordering information

No.	Code	Description
01	AS-02070-00	MTV-1, DC6V, 0.6W
02	AS-02071-01	DC6V Power Adapter
03	AS-02071-02	Battery box for 4pcs AA batteries

06 MTV-100 Multi-Tube Vortex

Features

1. **Pulsing Mode:**
Programmable pulsing mode allows users to adjust the pulse-on and pulse-off times between 1~59 seconds in 1 second intervals. This feature enhances the vortex action by creating a vigorous mix
2. **Microprocessor Control:**
The variable speed microprocessor control provides consistent uniform mixing action
3. **LCD Display:**
Independent LCD displays for speed and time allow operator to view both settings
4. **Applications:**
Suspensions, high throughput testing in clinical, environmental, and chemistry labs



Specification

Model	MTV-100
Mixing Orbit	3.6mm
Speed Range	500-2500rpm
Timer range	1min-99h59min
Maximum Weight Capacity	4.5kg
Speed Accuracy	10rpm
Tray Dimensions (L x W)mm	310 x 180 mm
Dimensions (L x W x H)mm	426 x 250 x 480 mm
Weight	21.5kg
Power	60W

Ordering information

No.	Code	Description		
01	AS-02040-00	MTV-100, AC100~240V, 1.5A		
No.	Code	Type	Description	Dimension (mm)
01	AS-02041-01	MTV-B01	50 x Φ10mm tube racks	245 x 132 x 45mm
02	AS-02041-02	MTV-B02	50 x Φ12mm tube racks	245 x 132 x 45mm
03	AS-02041-03	MTV-B03	50 x Φ13mm tube racks	245 x 132 x 45mm
04	AS-02041-04	MTV-B04	50 x Φ16mm tube racks	245 x 132 x 45mm
05	AS-02041-05	MTV-B05	15 x Φ25mm tube racks	245 x 132 x 45mm
06	AS-02041-06	MTV-B06	15 x Φ29mm tube racks	245 x 132 x 45mm
07	AS-02041-00	MTV-B00	Tray pad set (upper & lower)	305 x 178.5 x 25mm

01 OS-100/OS-200 Orbital Shaker

Features

The OS-100 and OS-200 Orbital Shaker are powerful variable speed shaker which provides efficient orbital motion. Speed and time are under microprocessor control. The OS-200/OS-100 shaker can be applicable in different labs: microbiology, chemistry, immunology, biochemistry and molecular biology



Specification

Model	OS-100	OS-200
Shaking Speed	50--300rpm	50--250rpm
Orbit	10mm	20mm
Timer range	1min~99h59min	1min~99h59min
Load capacity	See below table	See below table
Max. capacity	3.0kg	2.5kg
Motor	DC brushless	DC brushless
Operating ambient	4-45°C	4-45°C
Dimensions (mm)	280 x 270 x 110 mm	280 x 270 x 110 mm

Ordering information

No.	Code	Description
01	AS-04030-00	OS-100, AC100-240V, 50/60HZ, 2A
02	AS-04020-00	OS-200, AC100-240V, 50/60HZ, 2A
03	AS-04021-01	PP-1, flat platform with non-slip rubber mat
04	AS-04021-02	PP12-100, platform with clamps for flasks, 100-150ml
05	AS-04021-03	PP06-250, platform with clamps for flasks, 250-300ml
06	AS-04021-04	UP-1, universal platform with adjustable bars for different types of flasks, bottles
07	AS-04021-05	MP-1, platform with springs

01 MD200 Series Sample Concentration

Description

MD200-1 / MD200-2 / MD200-1A sample concentration consists of a base and stand assembly, sample holder and gas distribution system

Features

1. Blowing a large number of samples at one time
2. Easy operation, safe and reliable to use, amount of airflow can be adjusted
3. High precision and wide range of temperature control



Specification

Model	MD200-1	MD200-1A	MD200-2
Temperature control range	RT.+5°C~150°C	RT.+5°C~150°C	RT.+5°C~150°C
Temp. control accuracy @40~100°C	±0.5°C	±0.5°C	±0.5°C
Temp. control accuracy @100-150°C	±1°C	±1°C	±1°C
Temp. accuracy for blocks @40°C	±0.3°C	±0.3°C	±0.3°C
Display Accuracy	0.1°C	0.1°C	0.1°C
Heating Time (from 40-150°C)	≤30min	≤30min	≤30min
Standard Blocks	1	1	2
Needle Length	150mm	80mm	150mm
Nitrogen Consumption	0~15L/min	0~15L/min	0~15L/min
Dimension (mm)	280 × 240 × 500 mm	280 × 240 × 500 mm	280 × 240 × 500 mm

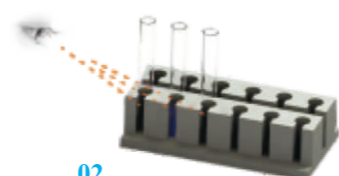
02 KD200 Sample Concentration

Features

1. Professionally-designed block, tester can be observed at the surface location of concentrated samples
2. Depending on the test-tube size and solvent volume they can be individually raised or lowered to the height
3. Easy operation; safe and reliable to use



01 Flow Control Valve



02 KD200 Visual diagram

Specification

Model	Kd200
Temperature control range	RT.+5°C~150°C
Temperature control discrepancy	≤1°C (RT.+5°C-100°C) / ≤1.5°C (100°C-150°C)
Heating time (from 40 to 150°C)	≤30min
Timer range	1min-99h59min
Maximum input power	400W
Temp. control discrepancy	0.1°C
Needle length	150mm
Capacity	12pcs
Dimensions (mm)	280 × 240 × 500 mm

03 WD-12 Sample Concentration

Features

1. Accommodates samples in test tubes 10 to 29mm diameter, Volumes from 1 ml to 50 ml
2. LED display, 12 position, Circular stand turns so each sample is accessible from the front
3. A needle valve adjusts gas flow at each position
4. Water bath provides gentle heat, Temperature setting range: Ambient temperature ~ 99°C
5. All metal parts are made of stainless steel, nickel chromed brass or anodized aluminum



Specification

Model	WD-12
Temperature control range	RT.+5°C~99°C
Temperature control accuracy	±1°C
Tube size	10-29mm
Beaker / Tube size	<Φ30 mm
Gas flow	0-15L/min
Nitrogen Consumption	330ml/min
Needle Length	128mm
Accommodates samples	12pcs
Inner dimension	Φ260 x 150mm

Ordering information

No.	Code	Description
01	AS-06050-00	MD200-1, AC220V/AC120V, 50/60Hz, 200W
02	AS-06060-00	MD200-1A, AC220V/AC120V, 50/60Hz, 200W
03	AS-06070-00	MD200-2, AC220V/AC120V, 50/60Hz, 400W
04	AS-06090-00	Kd200, AC220V/AC120V, 50/60Hz, 400W
05	AS-06080-00	WD-12, AC220V/AC120V, 50/60Hz, 1000W
06	AS-06051-01	150mm Needles (just for MD200-1 and MD200-2)
07	AS-06061-01	80mm Needles (just for MD200-1A)
08	AS-06081-01	150mm Needles (just for KD200 and WD-12)
09	AS-06051-02	Flow Control Valve (optional)

Accessories

MD200 series Sample Concentration (BK19 and BK20 are special for MD200-1A)

No.	Code	Type	Description	Dimensions(mm)
01	AS-01081-01	BK01	49 x Φ6mm	96 x 96 x 49mm
02	AS-01081-02	BK02	49 x Φ7mm	96 x 96 x 49mm
03	AS-01081-03	BK03	25 x Φ10mm	96 x 96 x 49mm
04	AS-01081-04	BK04	25 x Φ12mm	96 x 96 x 49mm
05	AS-01081-05	BK05	25 x Φ13mm	96 x 96 x 49mm
06	AS-01081-06	BK06	12 x Φ15mm	96 x 96 x 49mm
07	AS-01081-07	BK07	16 x Φ15mm	96 x 96 x 49mm
08	AS-01081-08	BK08	12 x Φ16mm	96 x 96 x 49mm
09	AS-01081-09	BK09	16 x Φ16mm	96 x 96 x 49mm
10	AS-01081-10	BK10	12 x Φ19mm	96 x 96 x 49mm
11	AS-01081-11	BK11	16 x Φ19mm	96 x 96 x 49mm
12	AS-01081-12	BK12	9 x Φ20mm	96 x 96 x 49mm
13	AS-01081-13	BK13	9 x Φ26mm	96 x 96 x 49mm
14	AS-01081-14	BK14	4 x Φ28mm	96 x 96 x 49mm
15	AS-01081-15	BK15	4 x Φ40mm	96 x 96 x 49mm
16	AS-01081-16	BK16	49 x 0.5ml tubes	96 x 96 x 49mm
17	AS-01081-17	BK17	25 x 1.5ml tubes	96 x 96 x 49mm
18	AS-01081-18	BK18	25 x 2.0ml tubes	96 x 96 x 49mm
19	AS-01091-01	BK19	96 x 0.2ml tubes	78 x 114 x 26mm
20	AS-01091-02	BK20	96 x 0.2ml microplate	81 x 123 x 19mm
KD200				
No.	Code	Type	Description	Dimensions (mm)
01	AS-06091-01	BD01	12 x Φ10mm	192 x 96 x 49mm
02	AS-06091-02	BD02	12 x Φ12mm	192 x 96 x 49mm
03	AS-06091-03	BD03	12 x Φ13mm	192 x 96 x 49mm
04	AS-06091-04	BD04	12 x Φ15mm	192 x 96 x 49mm
05	AS-06091-05	BD05	12 x Φ16mm	192 x 96 x 49mm
06	AS-06091-06	BD06	12 x Φ19mm	192 x 96 x 49mm
07	AS-06091-07	BD07	12 x Φ20mm	192 x 96 x 49mm

Note: BK19 and BK20 are special for MD200-1A

01 HM-3000 Series Bacti-Cinerator Sterilizer

Features

The Bacti-Cinerator Sterilizer sterilizes micro-organisms utilizing infrared heat produced by a ceramic core element. The ceramic element contains no asbestos and ensures maximum sterility without splatter across the work surface area. Complete sterilization occurs within 5-7sec at optimum sterilizing temperature of 1500°F (815.6°C). The small footprint makes the Bacti-Cinerator Sterilizer an ideal instrument for anaerobic and aerobic chambers alike. Several user friendly accessories are also available for the Bacti-Cinerator sterilizer

Specification

Model	HM-3000A	HM-3000C	HM-3000D	HM-3000E
Center High-temperature	825°C±50°C	825°C±50°C	825°C±50°C	825°C±50°C
Adjustable angle range	----	----	55°	55°
Max-Sterilizer Goods diameter	Φ14mm	Φ35mm	Φ14mm	Φ35mm
Length of Sterilizer	150mm	100mm	150mm	100mm
Dimensions (D x W x H) mm	185 x 98 x 185 mm	162 x 98 x 225 mm	159 x 100 x 260 mm	153 x 100 x 280 mm
Power	170W	320W	170W	320W
Weight	1.3kg	1.3kg	1.5kg	1.6kg



HM-3000A



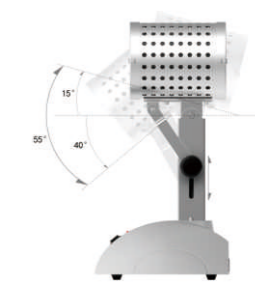
HM-3000C



HM-3000D



HM-3000E



HM-3000D and
HM-3000E
Adjustable heater

Ordering information

No.	Code	Description
01	AS-07020-00	HM-3000A, AC220V/AC120V, 50/60Hz, 1A
02	AS-07050-00	HM-3000C, AC220V/AC120V, 50/60Hz, 1A
03	AS-07090-00	HM-3000D, AC220V/AC120V, 50/60Hz, 1A
04	AS-07100-00	HM-3000E, AC220V/AC120V, 50/60Hz, 1A
05	AS-07021-01	220V Heater for HM-3000A
06	AS-07021-02	120V Heater for HM-3000A
07	AS-07051-01	220V Heater for HM-3000C
08	AS-07051-02	120V Heater for HM-3000C
09	AS-07021-03	Holder for HM-3000A
10	AS-07051-03	Holder for HM-3000C

02 GBS-5000 Series Glass Bead Sterilizer

Features

Glass Bead Sterilizers are a Quick, Easy and Accurate alternative to traditional methods of sterilization, and compact enough to be placed on any Laminar Air Flow Work benches or any other worksite tables in a clean room atmosphere.



GBS-5000A



GBS-5000B

Specification

Model	GBS-5000A	GBS-5000B
Crucible size	Φ40mm x 80mm	Φ40mm x 140mm
Weight of Glass Bead	150g	300g
Temperature Range	100°C~300°C	100°C~300°C
Temp. Control Accuracy	≤5°C	≤5°C
Heating Time (40°C~300°C)	≤25min	≤25min
Power	120W	250W
Weight	2kg	2.5kg
Dimensions (mm)	130 x 145 x 155 mm	130 x 145 x 215 mm

Ordering information

No.	Code	Description
01	AS-07070-00	GBS-5000A, AC200-AC240V/AC100-AC120V, 50/60Hz
02	AS-07080-00	GBS-5000B, AC200-AC240V/AC100-AC120V, 50/60Hz
03	AS-07071-01	150g Glass beads (Φ3mm)
04	AS-07071-02	300g Glass beads (Φ3mm)

01 MiniT Series Biological Indicator Incubator

Description

The MiniT-1 and MiniT-3 Biological Indicator Incubator are designed for temperature incubation of the EO Biological Indicators. Both of them are compact, tabletop incubator.

Features

1. LCD display
2. User can set the incubating temperature and time.
3. Exact correspondence of the set and actual temperature
4. It is easy to set up and use
5. The Incubator has many wells for placement of the biological indicator vials and the wells can be custom-made.



MiniT-1



MiniT-3

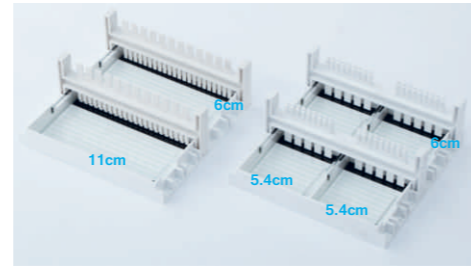
Specification

Model	MiniT-1	MiniT-3
Temp. Control Range	RT.+5°C~80°C	RT.+5°C~100°C
Timer Range	1min-99h59min	1min-99h59min
Temp. Control Accuracy	±0.5°C	±0.5°C
Display Accuracy	±0.1°C	±0.1°C
Heating Time(25 to 57°C)	≤6min	≤6min
Dimensions (mm)	110 x 150 x 80	120 x 152 x 112
Weight	0.5kg	0.85kg

Ordering information

No.	Code	Description	
01	AS-09020-00	MiniT-1, AC100~240V, 50/60Hz, 0.5A	
02	AS-09030-00	MiniT-3, AC100~240V, 50/60Hz, 0.5A	
Accessories			
No.	Code	Type	Description
01	AS-09021-01	A-MiniT-1	15 x Φ10mm
02	AS-09021-02	B-MiniT-1	15 x Φ12mm
03	AS-09021-03	C-MiniT-1	6 x Φ15mm
04	AS-09021-04	D-MiniT-1	6 x Φ16mm
05	AS-09021-05	E-MiniT-1	24 x Φ8.8mm
06	AS-09021-06	F-MiniT-1	18 x Φ9mm
07	AS-09021-07	G-MiniT-1	12 x Φ12.5mm
08	AS-09021-08	H-MiniT-1	6 x Φ16.5mm

01 Mini-ES Mini-Electrophoresis System



Specification

Input Power	AC100~120V, 50~60Hz / AC200~240V, 50~60Hz
Output Power	DC35V / DC50V / DC100V
Bath Dimensions (mm)	110 x 121 x 43mm
Volume of Bath	230ml
Construction of Bath	PC+ABS with high temperature resistance
Timer range	1min~99min
Max.Power	40W
Dimensions (mm)	190 x 130 x 60mm

Accessories

Tooth wide (width x thickness x no.)	3mm x 1mm x 22 / 5.6mm x 1mm x 12 / 3mm x 1mm x 18 / 5.6mm x 1mm x 10
Gel Dimension (W x D)mm	126 x 126mm-1pcs
Gel Migration Board (W x D)mm	110 x 60mm-2pcs / 54 x 60mm-4pcs

Ordering information

No.	Code	Description
01	AS-14010-00	Mini-ES1, AC100~120V, 50~60Hz
02	AS-14020-00	Mini-ES2, AC200~240V, 50~60Hz

02 K37-24 Gel Card Incubator

Description

The K37-24 Gel card incubator can be suitable for many types Gel cards from different manufacturers

Features

- 2 independent incubation zones with a capacity for 12 Gel cards
- Incubator for 24-Gel Cards in racks at 37°C
- Digital interface screen for control and visualization of remaining incubation time and real temperature for each zone



K37-24

03 TD2-12/TD2-24 Gel Card Centrifuge

Description

The Gel card centrifuge holds automatic balance control and user can set speed and centrifugation time. It can be suitable for many types Gel cards from different manufacturers.

Features

- Digital interface visor control and visualization of centrifuge speed and time remaining for processing
- Automatic balance control
- Pre-defined centrifugal parameters for optimum Gel cards procession, acceleration, speed, braking and time
- Programmable audible alarms for end of centrifuge time periods



TD2-24



TD2-12

Specification

Model	K37-24	
Temperature	37°C	
Temperature uniformity	≤0.5°C	
Temperature stability	≤0.2°C	
Temperature accuracy	<0.5°C	
Capacity	24 Gel cards	
Power	220V 3A 200W	
Dimensions (mm)	220 × 380 × 140 mm	
Model	TD2-12	TD2-24
Speed Range	800~1800rpm	500~1500rpm
RCF. Range	54~272 × g	33~294 × g
Capacity	12 Gel Cards	24 Gel Cards
Timer	1~20min	1~20min
Noise	≤55db	≤55db
Power	AC100-240V 85W	AC100-240V 85W
Dimensions (mm)	440 × 340 × 170 mm	530 × 410 × 180 mm
Weight	7kg	11.5kg

Ordering information

No.	Code	Description
01	AS-10020-00	K37-24, Ac120 / AC220V, 50/60Hz, 3A
02	AS-10030-00	TD2-12, AC100~240V, 50/60Hz, 3A
03	AS-10010-00	TD2-24, AC100~240V, 50/60Hz, 3A